



AC1200 Wi-Fi Router

Full Gigabit | Dual Band



Archer C6U



867 Mbps 5 GHz +
300 Mbps 2.4 GHz†



Faster Wi-Fi with
MU-MIMO



Full Gigabit
Ports

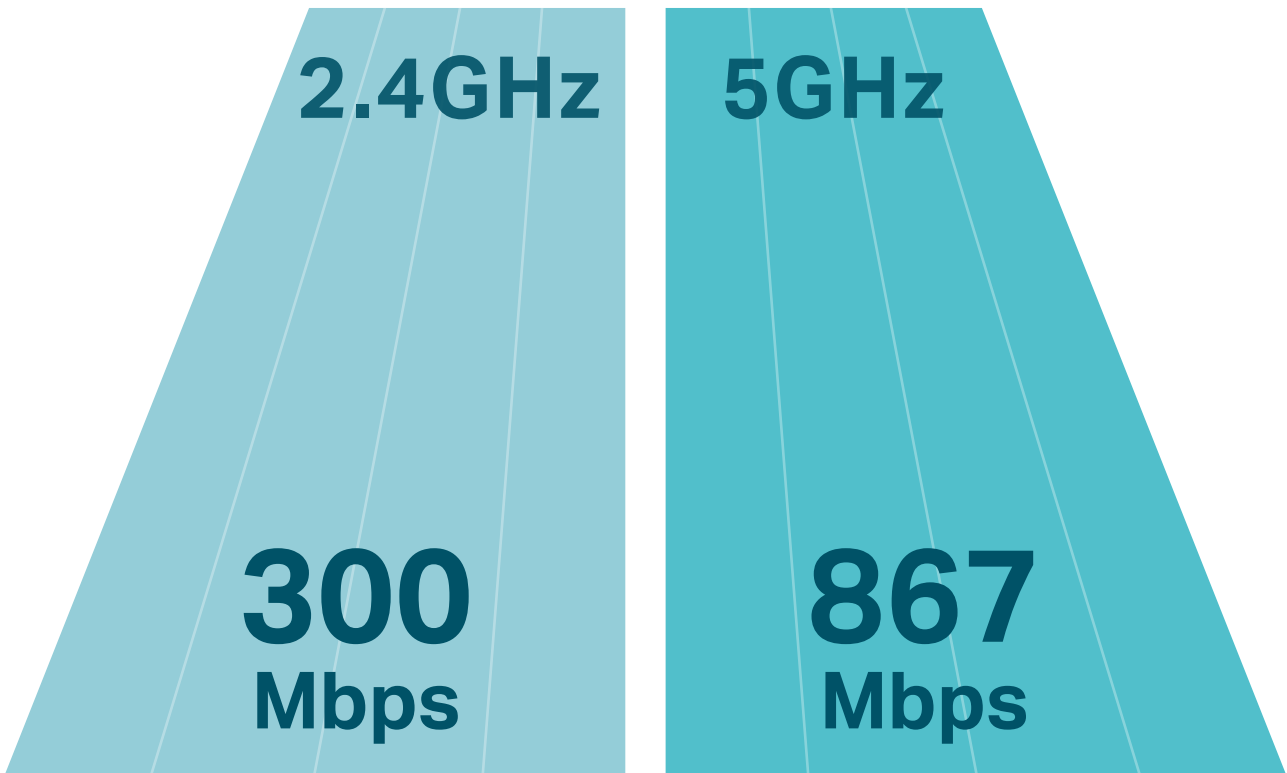


Easy Sharing
via USB 2.0 Port

Highlights

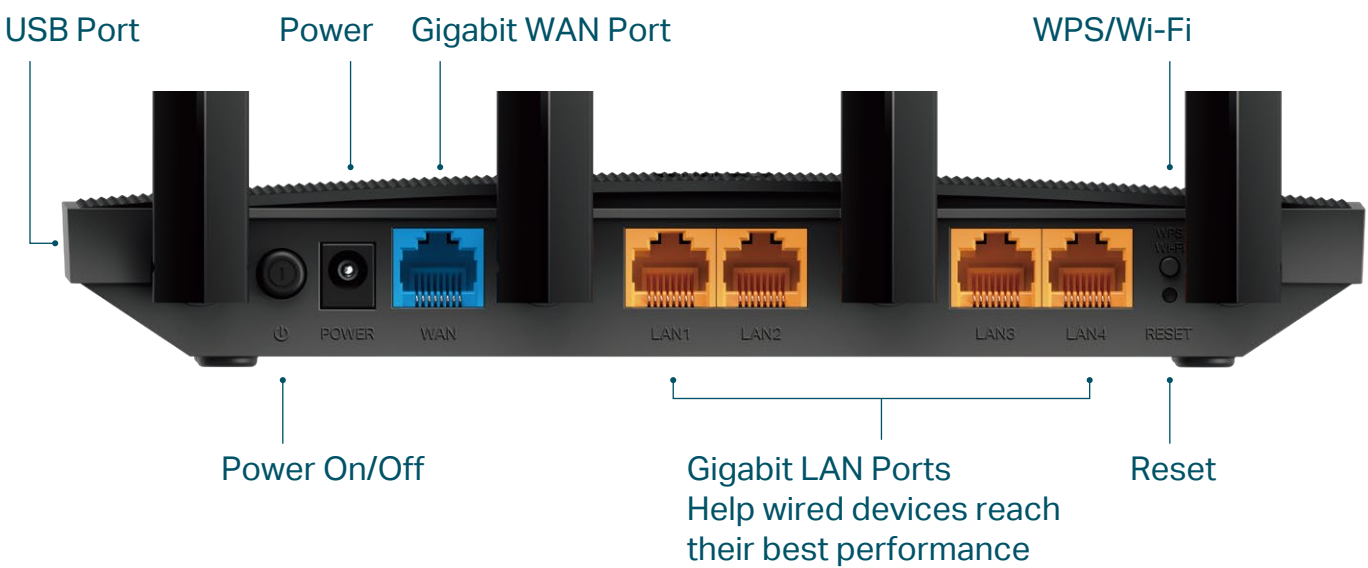
Speeds up to 1167 Mbps

867 Mbps on the 5 GHz band and 300 Mbps on the 2.4 GHz are ideal for both everyday tasks and lag-free online entertainment. †



10× Faster Connectivity

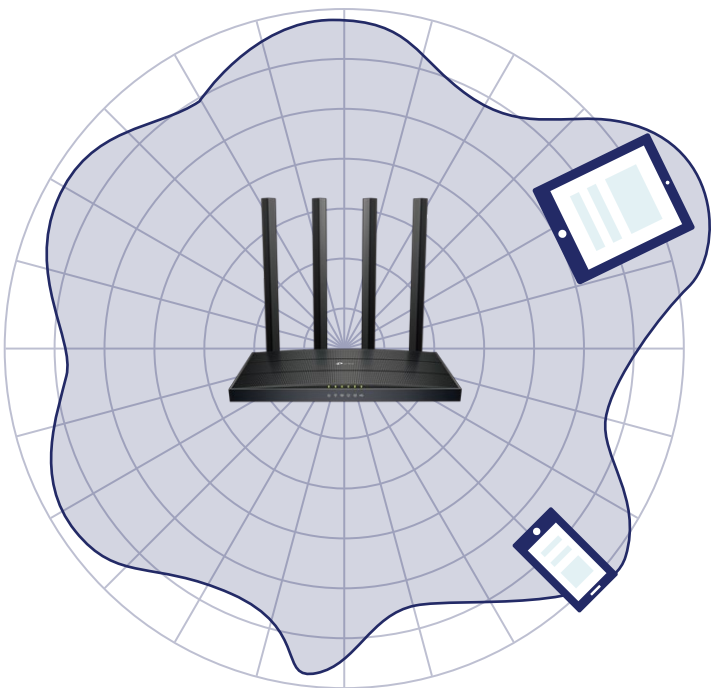
Gigabit Ethernet ports deliver maximum wired speeds. Plug in PCs, smart TVs, and game consoles for fast and reliable connections. Easily to connect external storage devices with the USB 2.0 port to rapidly share files, photos, and videos.



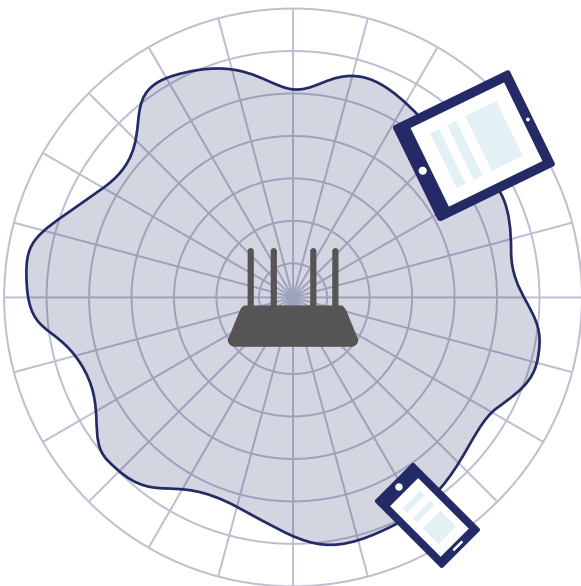
Highlights

Vast Wi-Fi Coverage

Four external omni-directional antennas create strong, clear, dependable Wi-Fi throughout your home. Beamforming detects the location of your connected devices and concentrates the Archer C6U's signal towards them to optimize wireless connections.[†]



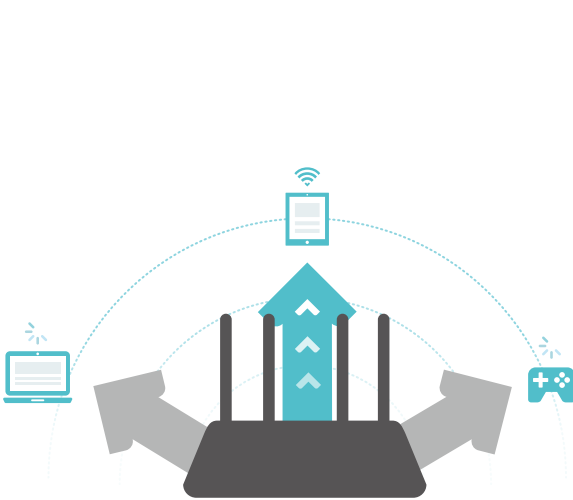
Archer C6U



Regular Router

MU-MIMO

MU-MIMO technology serves multiple devices at once, reducing wait time, increasing Wi-Fi throughput for every device, and making each stream more efficient.[‡]



Traditional Router



MU-MIMO Router

Highlights

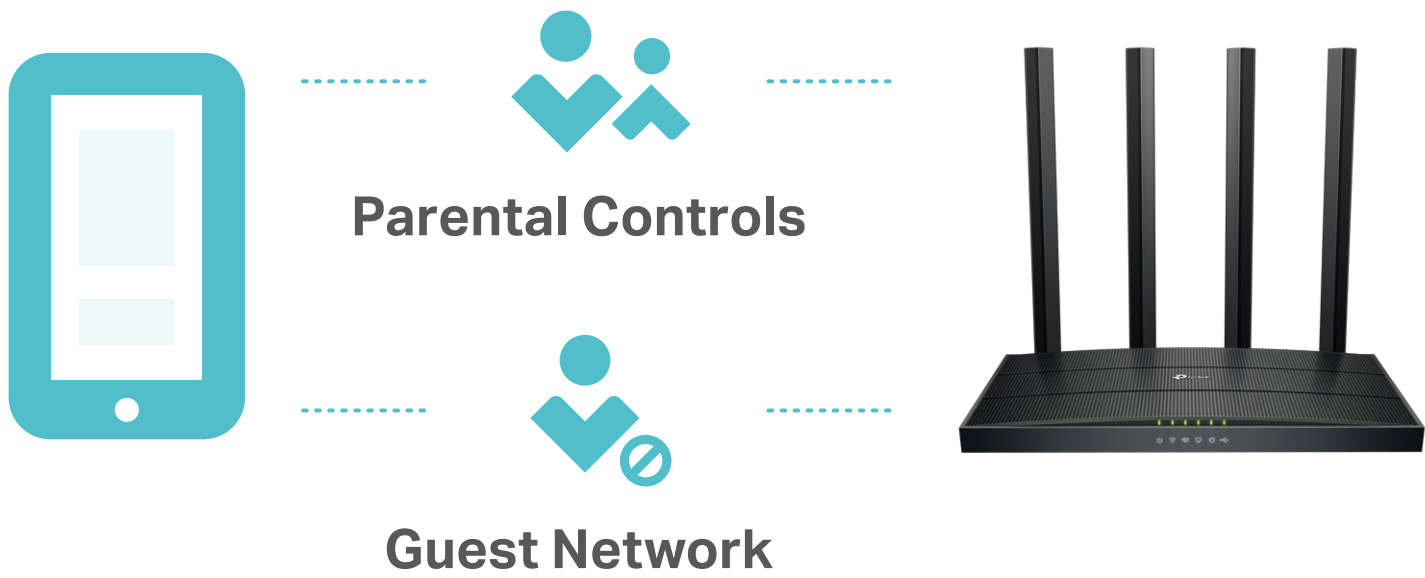
Secure VPN Access

OpenVPN and PPTP VPN connections provide remote, secure access methods. Enjoy services and reach files on your network from anywhere—while keeping your data safe at all times.



Personalized Management

Block inappropriate content and set daily limits for the total time children/staff spend online through Parental Controls. Guest Network creates a separate access point for guests, to ensure your privacy is secure.

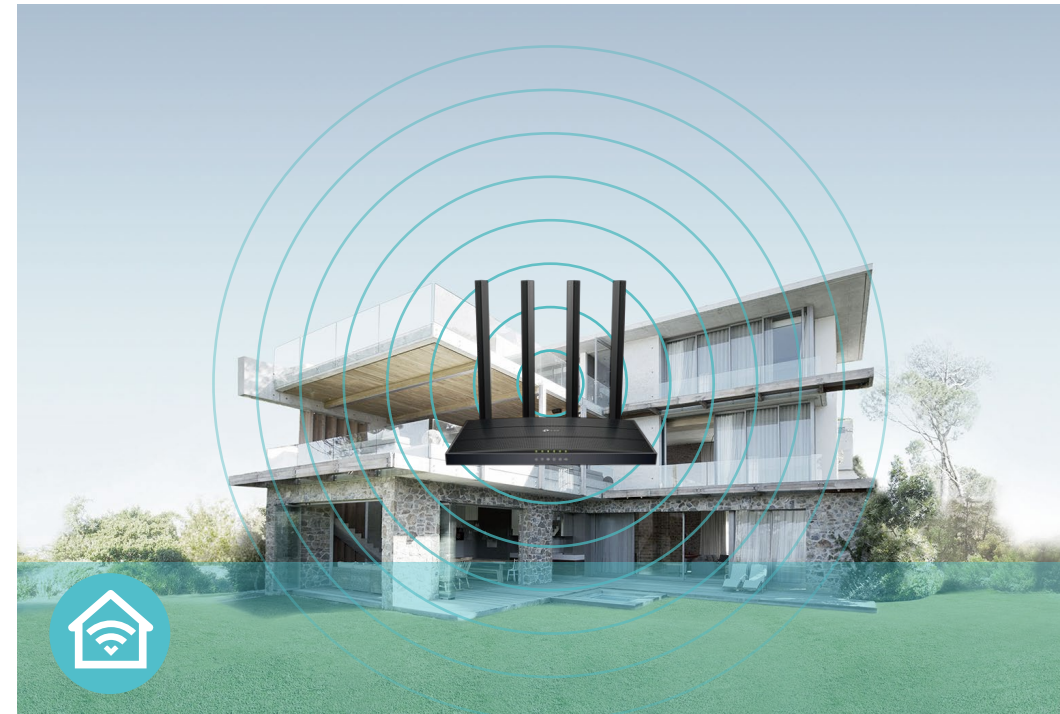


Features



Speed

- **802.11ac Technology** – Powered by 802.11ac Wi-Fi technology, Archer C6U creates a reliable, blazing-fast network.
- **Ultimate Wireless Speed** – 867 Mbps on 5 GHz + 300 Mbps on 2.4 GHz
- **MU-MIMO Technology** – Simultaneously exchanges data with several devices, making each stream more efficient



Wi-Fi Range

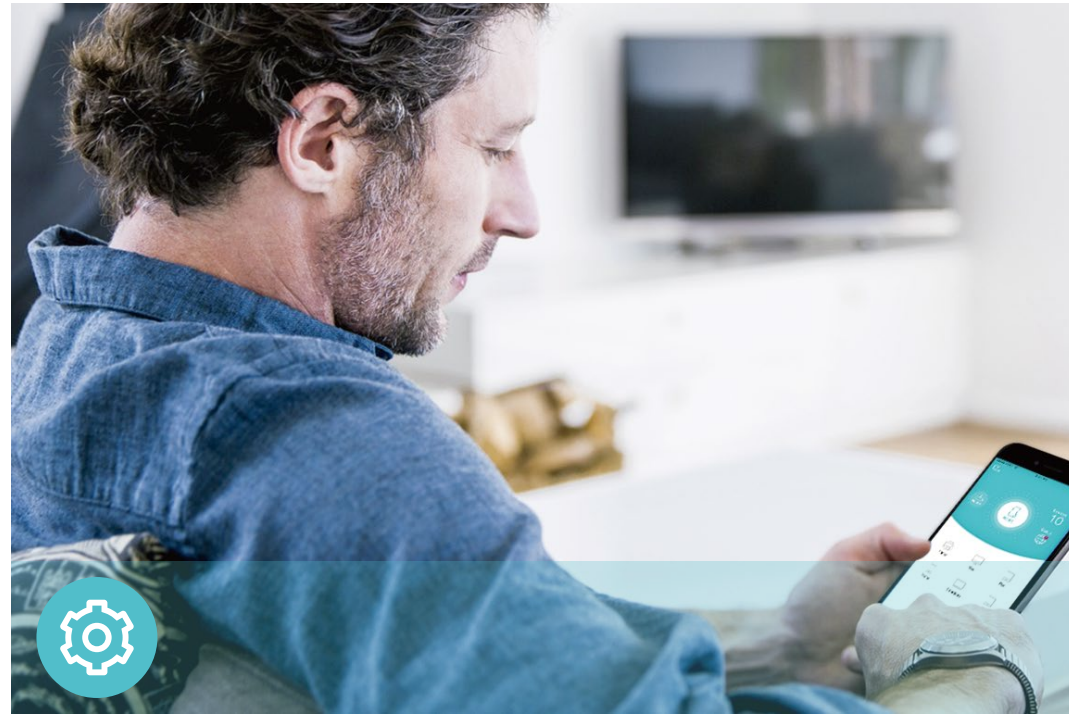
- **Ultimate Range Wi-Fi** – Four external antennas deliver a Wi-Fi signal to every corner of your home, making all of your connections more efficient and stable
- **Beamforming Technology** – Concentrates Wi-Fi signals towards individual devices to ensure stronger connections



Reliability

- **Simultaneous Dual Band** – Separate Wi-Fi bands enable more devices to connect to your network without a drop in performance
- **IPv6** – Compatible with IPv6 (Internet Protocol version 6)
- **Smart Connect** – Intelligently switches each device's connection to the optimum available Wi-Fi band
- **IPTV** – Supports IGMP Proxy/Snooping, Bridge and Tag VLAN to optimize IPTV streaming

Features



Easy Management

- Intuitive Web UI – Ensures quick and simple installation without hassle
- Hassle-free Management with Tether App – Network management is made easy with the TP-Link Tether App, available on any Android and iOS device
- TP-Link ID – Binds the router to your TP-Link ID and other family member's accounts to manage the router



Security

- Guest Network – Keeps your main network secure by creating a separate network for friends and visitors
- Parental Controls – Restricts internet access time and contents for children devices
- Security – Protects your home network with Firewalls and wireless encryption
- Secure VPN Access – Provides a private network with a safe and secure OpenVPN and PPTP VPN connection



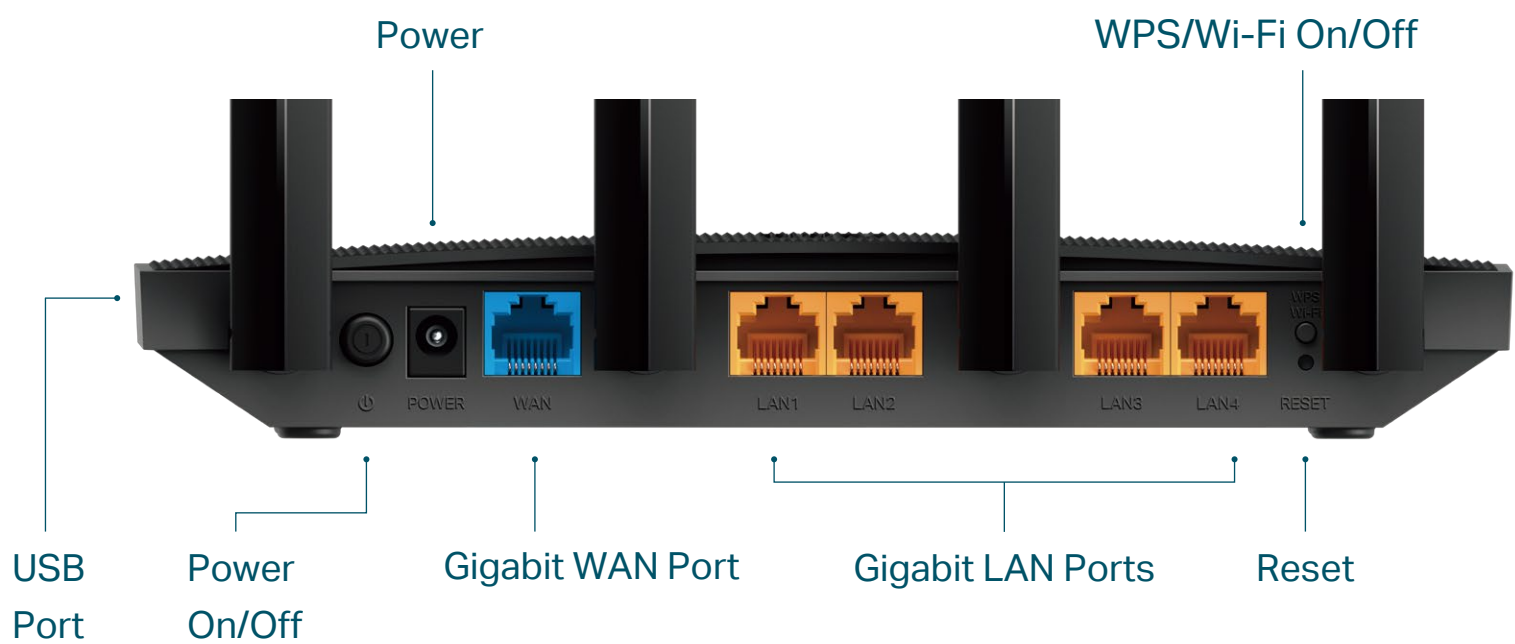
Ease of Use

- WPS – Makes secure wireless connection quick and easy with the push of a button
- Wi-Fi Schedule – The wireless network can be automatically off within a specified period when you do not need the wireless connection
- LED Control – Automatically turns your router's LEDs off within a specified period
- USB Port for Fast Sharing – With the USB port, you can access and share your files locally, or remotely through the router's FTP server
- Media Sharing – Allows you to play music, watch videos and view photos from any device on your network

Specifications

Hardware

- Ethernet Ports: 1× 10/100/1000 Mbps WAN Port, 4×10/100/1000 Mbps LAN Port, 1× USB 2.0 Port
- Buttons: WPS/Wi-Fi Button, Power On/Off Button, Reset Button
- Antennas: 4 Fixed Omni Directional Antennas
- External Power Supply: 12V/1.5A
- Dimensions (W x D x H): 8.5 × 4.9 × 1.2 in (215 × 125 × 30mm)



Wireless

- Wireless: 867 Mbps on 5 GHz + 300 Mbps on 2.4 GHz
- Frequency: 2.4 GHz and 5 GHz
- Transmit Power:
CE: <20dBm(2.4 GHz), <23dBm(5.15 GHz~5.25 GHz)
- Reception Sensitivity:
5 GHz:
11a 6Mbps:-94dBm, 11a 54Mbps:-77dBm
11ac VHT20_MCS0:-98dBm, 11ac VHT20_MCS8:-72dBm
11ac VHT40_MCS0:-92dBm, 11ac VHT40_MCS9:-66dBm
11ac VHT80_MCS0:-89dBm, 11ac VHT80_MCS9:-63dBm
2.4 GHz:
11g 6Mbps:-94dBm, 11g 54Mbps:-77dBm
11n HT20_MCS7:-75dBm, 11n HT40_MCS7:-72dBm
- Wireless Function: Enable/Disable Wireless Radio, WMM
- Wireless Security: 64/128-bit WEP, WPA/WPA2, WPA-PSK/WPA2-PSK encryptions

Specifications

Software

- Quality of Service: Device Prioritization
- WAN Type: Dynamic IP/Static IP/PPPoE(Dual Access)/PPTP(Dual Access)/L2TP(Dual Access)
- Management: Access Control, Local Management, Remote Management
- DHCP: Server, DHCP Client List, Address Reservation
- Port Forwarding: Port Forwarding, Port Triggering, UPnP, DMZ
- Dynamic DNS: DynDns, NO-IP, TP-Link
- Access Control: Parental Controls, Local Management Control, White List, Black List
- Firewall Security: SPI Firewall, IP an
- Protocols: IPv4, IPv6
- USB Sharing: Supports Samba(Storage), FTP Server, Media Server
- VPN Server: PPTP, Open VPN
- Guest Network: 2.4 GHz Guest Network, 5 GHz Guest Network



Attention: This device may only be used indoors in all EU member states and EFTA countries.
Specifications are subject to change without notice. TP-Link is a registered trademark of TP-Link Technologies Co., Ltd. Other brands and product names are trademarks or registered trademarks of their respective holders. Copyright ©2020 TP-Link Technologies Co., Ltd. All rights reserved.
*Maximum wireless signal rates are the physical rates derived from IEEE Standard 802.11 specifications. Actual wireless data throughput and wireless coverage are not guaranteed and will vary as a result of network conditions, client limitations, and environmental factors, including building materials, obstacles, volume and density of traffic, and client location.
‡Use of MU-MIMO requires clients to also support MU-MIMO.

Others

- Certification:
CE, RoHS
- System Requirements:
Microsoft Windows 98SE/NT/2000/XP/Vista™/7/8/8.1/10, MAC OS, NetWare, UNIX or Linux

Internet Explorer 11, Firefox 12.0, Chrome 20.0, Safari 4.0, or other Java-enabled browser

Cable or DSL Modem

Subscription with an internet service provider (for internet access)
- Environment:
Operating Temperature: 0°C~40°C (32°F ~104°F)
Operating Humidity: 10%~90% non-condensing
Storage Humidity: 5%~90% non-condensing
- Package Contents
Wireless Router Archer C6U

Power Adapter

RJ45 Ethernet Cable

Quick Installation Guide