

THERMAL OVERLOAD RELAYS

LST THERMAL OVERLOAD RELAYS, SIZE 00



LSTD0032

SCHRACK INFO

- Equipment:
 - Overload and phase failure protection
 - Auxiliary contacts 1 NO + 1 NC
 - Manual and automatic RESET
 - Switch position indicator
 - TEST function and STOP buttons
 - Sealable
- Auxiliary contact terminal 14/22 and the contactor coil terminal A2 connected through
- For dimensions, wiring diagram and location of the terminals, see from page 848.

DESCRIPTION	NOMINAL CURRENT A / kW*	EAN CODE	AVAILABLE	ORDER NO.
SIZE 00				
Thermal overload relay	0.11...0.16 A / 0.04 kW	9004840541731		LSTD0016
Thermal overload relay	0.14...0.20 A / 0.06 kW	9004840541748		LSTD0020
Thermal overload relay	0.18...0.25 A / 0.06 kW	9004840541755		LSTD0025
Thermal overload relay	0.22...0.32 A / 0.09 kW	9004840541762		LSTD0032
Thermal overload relay	0.28...0.40 A / 0.09 kW	9004840541779		LSTD0040
Thermal overload relay	0.35...0.50 A / 0.12 kW	9004840541786		LSTD0050
Thermal overload relay	0.45...0.63 A / 0.18 kW	9004840541793		LSTD0063
Thermal overload relay	0.55...0.80 A / 0.18 kW	9004840541809		LSTD0080
Thermal overload relay	0.70...1.00 A / 0.25 kW	9004840541816		LSTD0100
Thermal overload relay	0.90...1.25 A / 0.37 kW	9004840541823		LSTD0125
Thermal overload relay	1.10...1.60 A / 0.55 kW	9004840541830		LSTD0160
Thermal overload relay	1.40...2.00 A / 0.75 kW	9004840541847		LSTD0200
Thermal overload relay	1.80...2.50 A / 0.75 kW	9004840541854		LSTD0250
Thermal overload relay	2.20...3.20 A / 1.10 kW	9004840541861		LSTD0320
Thermal overload relay	2.80...4.00 A / 1.50 kW	9004840541878		LSTD0400
Thermal overload relay	3.50...5.00 A / 1.50 kW	9004840541885		LSTD0500
Thermal overload relay	4.50...6.30 A / 2.20 kW	9004840541892		LSTD0630
Thermal overload relay	5.50...8.00 A / 3.00 kW	9004840541908		LSTD0800
Thermal overload relay	7.00...10.0 A / 4.00 kW	9004840541915		LSTD1000
Thermal overload relay	9.00...12.0 A / 5.00 kW	9004840541922		LSTD1200

*Reference values for 4-pole standard motors at 50 Hz/400 VAC. The selection depends on the specific starting and rated performance of the motor to be protected.



LST THERMAL OVERLOAD RELAYS, SIZE 0



LST0...

SCHRACK INFO

- Equipment:
 - Overload and phase failure protection
 - Auxiliary contacts 1 NO + 1 NC
 - Manual and automatic RESET
 - Switch position indicator
 - TEST function and STOP buttons
 - Sealable
- For dimensions, wiring diagram and location of the terminals, see from page 848.

DESCRIPTION	NOMINAL CURRENT A / kW*	EAN CODE	AVAILABLE	ORDER NO.
SIZE 0				
Thermal overload relay	18...25 A / 0.75 kW	9004840541939		LST00250
Thermal overload relay	22...32 A / 1.1 kW	9004840541946		LST00320
Thermal overload relay	28...40 A / 1.5 kW	9004840541953		LST00400
Thermal overload relay	35...50 A / 1.5 kW	9004840541960		LST00500
Thermal overload relay	45...63 A / 2.2 kW	9004840541977		LST00630
Thermal overload relay	55...80 A / 3.0 kW	9004840541984		LST00800
Thermal overload relay	7...10.0 A / 4.0 kW	9004840541991		LST01000
Thermal overload relay	9...12.5 A / 5.5 kW	9004840542004		LST01250
Thermal overload relay	11...16 A / 7.5 kW	9004840542011		LST01600
Thermal overload relay	14...20 A / 7.5 kW	9004840542028		LST02000
Thermal overload relay	17...22 A / 11.0 kW	9004840542035		LST02200
Thermal overload relay	20...25 A / 11.0 kW	9004840542042		LST02500

*Reference values for 4-pole standard motors at 50 Hz/400 VAC. The selection depends on the specific starting and rated performance of the motor to be protected.

LST THERMAL OVERLOAD RELAYS, SIZE 2



LST2...

SCHRACK INFO

- Equipment:
 - Overload and phase failure protection
 - Auxiliary contacts 1 NO + 1 NC
 - Manual and automatic RESET
 - Switch position indicator
 - TEST function and STOP buttons
 - Sealable
- For dimensions, wiring diagram and location of the terminals, see from page 848.

DESCRIPTION	NOMINAL CURRENT A / kW*	EAN CODE	AVAILABLE	ORDER NO.
SIZE 2				
Thermal overload relay	5.5...8 A / 3.0 kW	9004840542059		LST20800
Thermal overload relay	7...10 A / 4.0 kW	9004840542066		LST21000
Thermal overload relay	9...12.5 A / 5.5 kW	9004840542097		LST21250
Thermal overload relay	11...16 A / 7.5 kW	9004840542103		LST21600
Thermal overload relay	14...20 A / 7.5 kW	9004840542110		LST22000
Thermal overload relay	18...25 A / 11.0 kW	9004840542127		LST22500
Thermal overload relay	22...32 A / 15.0 kW	9004840542134		LST23200
Thermal overload relay	28...40 A / 18.5 kW	9004840542141		LST24000
Thermal overload relay	36...45 A / 22.0 kW	9004840542158		LST24500
Thermal overload relay	40...50 A / 22.0 kW	9004840542165		LST25000

*Reference values for 4-pole standard motors at 50 Hz/400 VAC. The selection depends on the specific starting and rated performance of the motor to be protected.



Order no. blue: on stock, usually ready for delivery on the day of order!

Скачано с сайта интернет магазина <https://axiomplus.com.ua>

THERMAL OVERLOAD RELAYS

LST THERMAL OVERLOAD RELAYS, SIZE 3



LST2...

SCHRACK INFO

- Equipment:
 - Overload and phase failure protection
 - Auxiliary contacts 1 NO + 1 NC
 - Manual and automatic RESET
 - Switch position indicator
 - TEST function and STOP buttons
 - Sealable
- For dimensions, wiring diagram and location of the terminals, see from page 848.

DESCRIPTION	NOMINAL CURRENT A / kW*	EAN CODE	AVAILABLE	ORDER NO.
SIZE 3				
Thermal overload relay	18...25 A / 11.0 kW	9004840542172		LST32500
Thermal overload relay	22...32 A / 15.0 kW	9004840542189		LST33200
Thermal overload relay	28...40 A / 18.5 kW	9004840542196		LST34000
Thermal overload relay	36...50 A / 22.0 kW	9004840542202		LST35000
Thermal overload relay	45...63 A / 33.0 kW	9004840542219		LST36300
Thermal overload relay	57...75 A / 37.0 kW	9004840542226		LST37500
Thermal overload relay	70...90 A / 45.0 kW	9004840542233		LST39000
Thermal overload relay	80...100 A / 45.0 kW	9004840542240		LST39999

*Reference values for 4-pole standard motors at 50 Hz/400 VAC. The selection depends on the specific starting and rated performance of the motor to be protected.

SEPARATE MOUNTING BRACKET



LSZDTE01

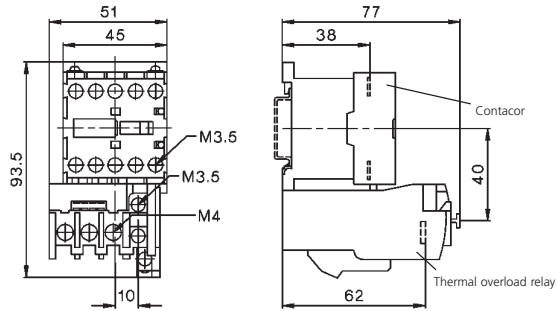
SCHRACK INFO

- For separate mounting of the thermal overload relays on mounting rail TS35 or DIN rail TH35
- Size 3 also suitable for TS75 or TH75

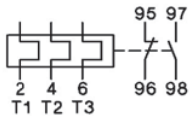
DESCRIPTION	EAN CODE	AVAILABLE	ORDER NO.
Separate mounting bracket, size 00	9004840542257		LSZDTE01
Separate mounting bracket, size 0	9004840542264		LSZ0TE01
Separate mounting bracket, size 2	9004840542271		LSZ2TE01
Separate mounting bracket, size 3	9004840542288		LSZ3TE01

LA1 THERMAL OVERLOAD RELAYS – DIMENSIONS, WIRING- AND CONNECTION DIAGRAMS

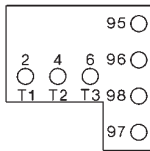
LA1003.. (+ CONTACTOR LA1009..)



LA1003.. manual reset



LA1003..



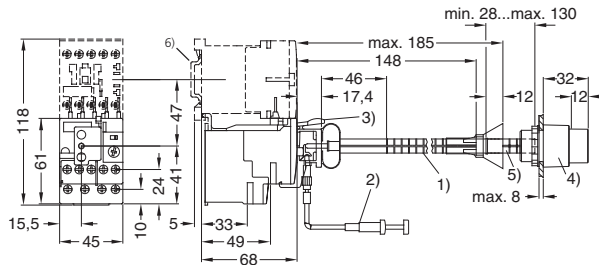
THERMAL OVERLOAD RELAYS

LST THERMAL OVERLOAD RELAYS – DIMENSIONS

Lateral distance to earthed parts at least 6 mm.

LSTD, SIZE 00

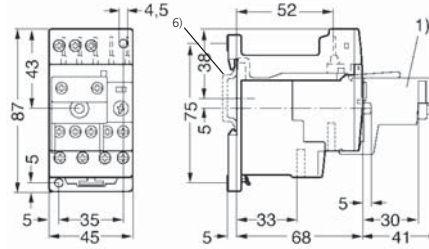
with mechanical RESET (on request)



- ¹⁾ Mechanical RESET (on request)
- ²⁾ Wire release (on request)
- ³⁾ Holder for RESET (on request)
- ⁴⁾ Pushbutton (on request)
- ⁵⁾ Extension plunger (on request)
- ⁶⁾ Mounting rail TS/TH35

LST0, SIZE 0

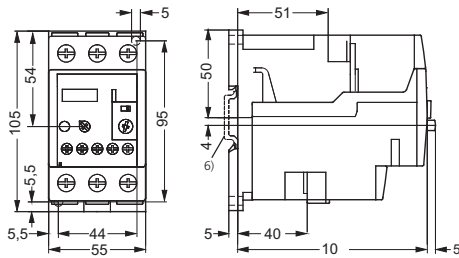
with separate mounting bracket LSZ0TE01



- ¹⁾ Mechanical RESET (on request)
- ⁶⁾ Mounting rail TS/TH35

LST2, SIZE 2

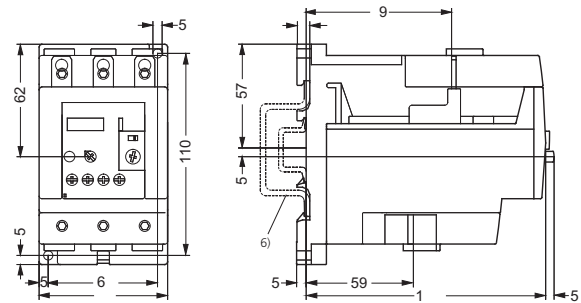
with separate mounting bracket LSZ2TE01



- ⁶⁾ Mounting rail TS/TH35

LST3, SIZE 3

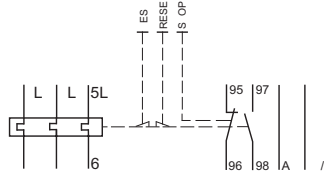
with separate mounting bracket LSZ3TE01



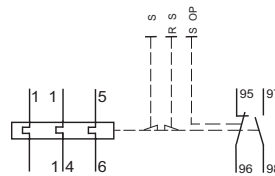
- ⁶⁾ Mounting rail TS/TH35 or TS/TH75

LST THERMAL OVERLOAD RELAYS – WIRING DIAGRAM

LSTD



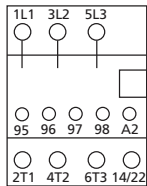
LST0, LST2, LST3



LST THERMAL OVERLOAD RELAYS – LOCATION OF TERMINALS

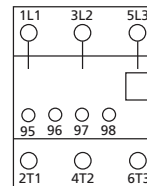
LSTD

with **LSZDTE01**



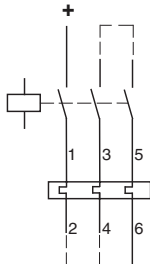
LST0, LST2, LST3

with **LST0TE01, LST2TE01, LST3TE01**



PROTECTION OF DC MOTORS

1-POLE SWITCHED (+)



2-POLE SWITCHED (+, -)

