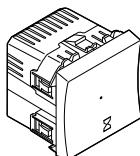
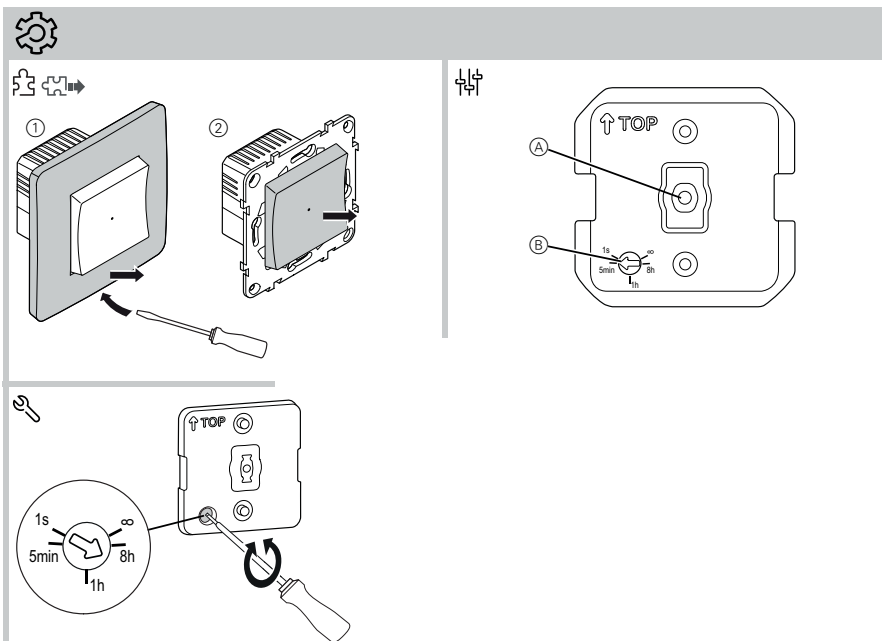
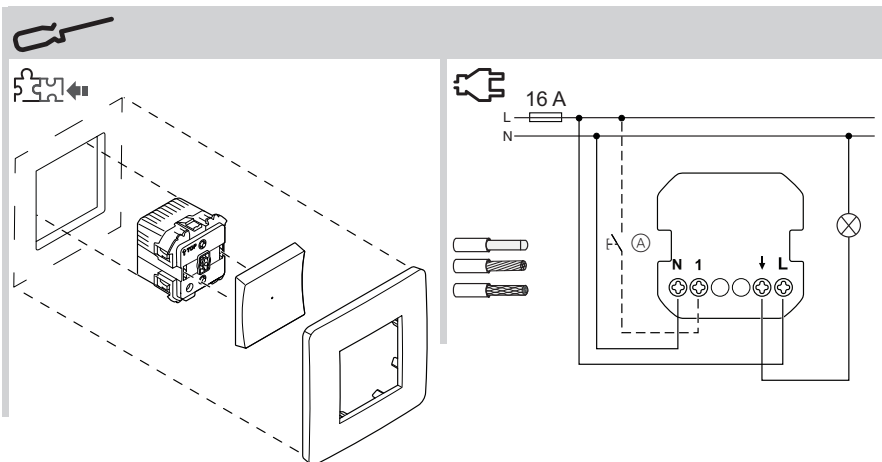


## Unica



NU353518, NU353530, NU353554



## Countdown timer 10 A

### Necessary accessories

To be completed with:

- Frame in corresponding design

### For your safety



**DANGER**  
**HAZARD OF ELECTRIC SHOCK, EXPLOSION, OR ARC FLASH**

Safe electrical installation must be carried out only by skilled professionals. Skilled professionals must prove profound knowledge in the following areas:

- Connecting to installation networks
- Connecting several electrical devices
- Laying electric cables
- Safety standards, local wiring rules and regulations

Failure to follow these instructions will result in death or serious injury.



**DANGER**  
**Risk of fatal injury from electric shock.**

The output may carry electrical current even when the load is switched off.

- When working on the device: Always disconnect the device from the supply by means of the fuse in the incoming circuit.

Failure to observe these instructions will lead to death or serious injuries.

### Getting to know the countdown timer 10 A

You can use the countdown timer 10 A (hereinafter referred to as **timer**) to switch on ohmic, inductive or capacitive loads for a settable overtravel time.

Properties:

- Manual switching off or restarting the overtravel time with an activated overtravel time.
- Operation with extension unit (mechanical push-button)
- Integrated status LED

Settings:

- Overtravel time: 5 minutes - 8 hours (default setting 5 minutes)
- Infinite mode: On/Off switch
- Trigger mode: Switching of a second timer

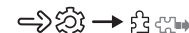
### Mounting the timer



- ① Mechanical push-button at extension unit connection (optional)

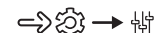
### Setting the timer

### Removing the cover



- ① Remove the frame.
- ② Pull the push-button off.

### Displays and operating elements



- ① Status LED (red)  
② Potentiometer

### Setting functions



### Overtravel time: 5min-1h-8h

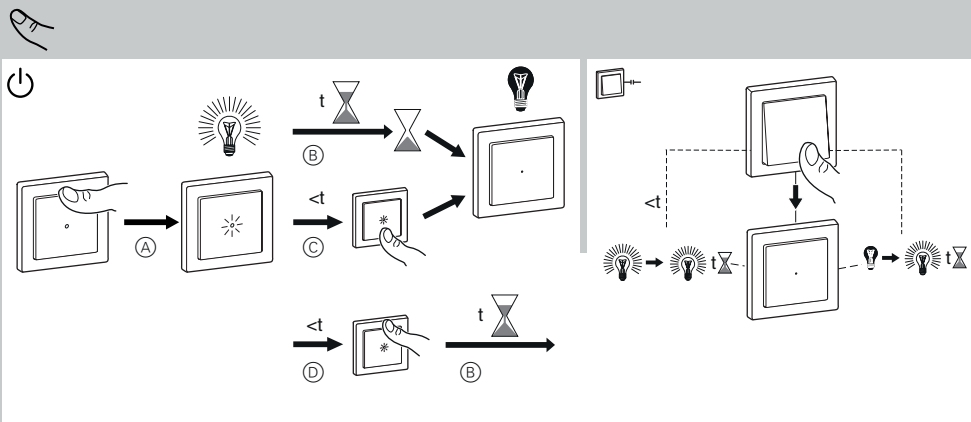
Set an infinitely adjustable overtravel time between 5 minutes and 8 hours. The further the potentiometer is turned anticlockwise, the faster the setting increases.

### Infinite mode: ∞

You can use the timer like a normal switch in infinite mode. Loads can only be switched off manually.

### Trigger mode: 1s

Using a timer in trigger mode, you can operate a second timer externally and switch connected loads.



LED...W		
LED 200 W	1050 VA	1000 VA
2200 W	<b>C</b> 10 A, 140 $\mu$ F	
2000 W	200 W	
	500 VA	

## Operating the timer

### Operating the timer locally



- Switch on the timer for the duration of the set overtravel time ( $t$ ).
  - The timer automatically switches off after overtravel time ( $t$ ) has elapsed.
  - Switch off the timer before overtravel time has elapsed ( $<t$ ).
- Connected loads and the LED switch on and off with the timer.
- Restart the activated overtravel time ( $t$ ) before it elapses ( $<t$ ).

### Operating the timer using an extension unit



Using a mechanical push-button connected to the extension unit connection, switch the timer on or restart the activated overtravel time before it has elapsed ( $<t$ ).

## What should I do if there is a problem?

### Connected load does not switch on:

- Check the power supply.
- Switch the timer off and back on again.
- Check the load.
- In the case of an external push-button, check the wiring.

## Technical data

Nominal voltage:	AC 230 V ~, 50 Hz
Nominal power:	W
Connecting terminals:	Screw terminals for max. 2 x 2.5 mm <sup>2</sup> 0.5 Nm
Extension unit:	Single push-button, unlimited number max. 50 m
Fuse protection:	16 A circuit breaker
Nominal current:	10 AX, cos $\phi$ = 0.6



Dispose of the device separately from household waste at an official collection point. Professional recycling protects people and the environment against potential negative effects.

## Schneider Electric Industries SAS

If you have technical questions, please contact the Customer Care Centre in your country.  
schneider-electric.com/contact