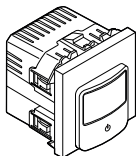
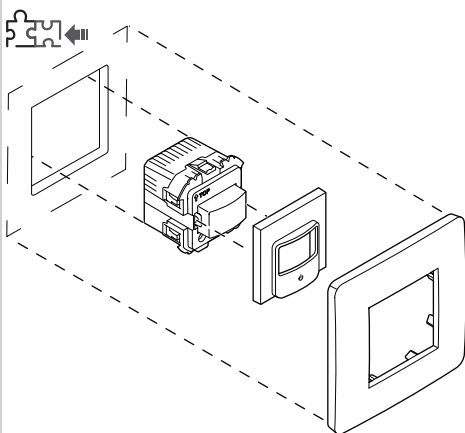
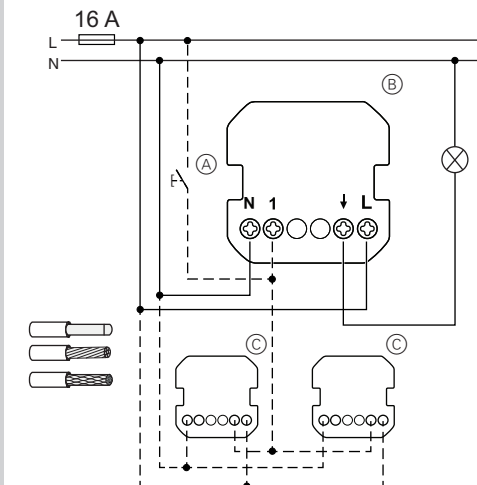
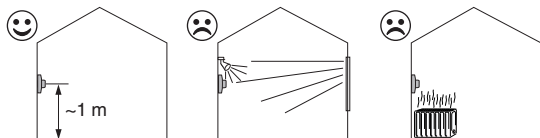
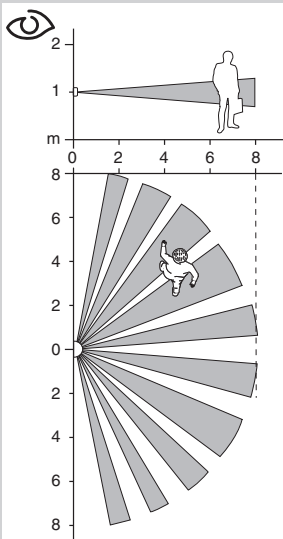


Unica



NU352518, NU352530, NU352554



Necessary accessories

To be completed with:

- Frame in corresponding design

Accessories

To be completed with:

- Carrier plate of the desired design.

For your safety



DANGER HAZARD OF ELECTRIC SHOCK, EXPLOSION, OR ARC FLASH

Safe electrical installation must be carried out only by skilled professionals. Skilled professionals must prove profound knowledge in the following areas:

- Connecting to installation networks
- Connecting several electrical devices
- Laying electric cables
- Safety standards, local wiring rules and regulations

Failure to follow these instructions will result in death or serious injury.



DANGER Risk of fatal injury from electric shock.

The output may carry electrical current even when the load is switched off.

- When working on the device: Always disconnect the device from the supply by means of the fuse in the incoming circuit.

Failure to observe these instructions will lead to death or serious injuries.

Getting to know the motion sensor with switch 10 A

The motion sensor with switch 10 A (hereinafter referred to as **motion sensor**) detects moving heat sources (e.g. persons) and can switch on ohmic, inductive or capacitive loads for a settable overtravel time.

Properties

- Detection range:
 - Automatic mode: Automatic switching on of loads when a motion is detected and dependent on the ambient brightness
 - Manual mode: Local switching on of loads when the switch is actuated, irrespective of the ambient brightness
 - Operation with extension unit (mechanical push-button)
 - Integrated status LED
- Settings:
- Detection brightness: 5 - 500 lux (default setting 50 lux)
 - Overtravel time: 1 second - 30 minutes (default setting 5 minutes)
 - Test mode: Checking the motion detection and installation
 - Slave mode: Sending a trigger command to a master when a motion is detected

Selecting the installation site



Avoid undesired switching by light and heat sources in the detection range of the motion sensor.

Mounting the motion sensor



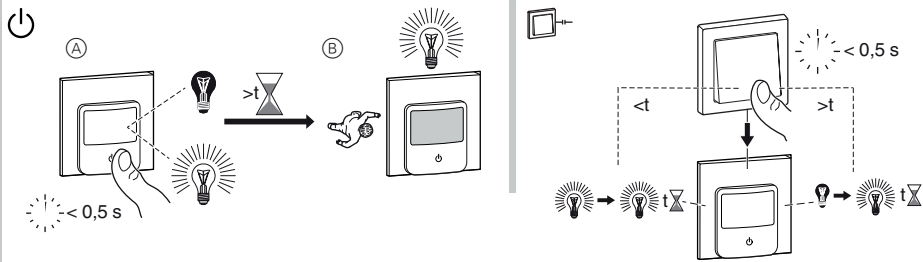
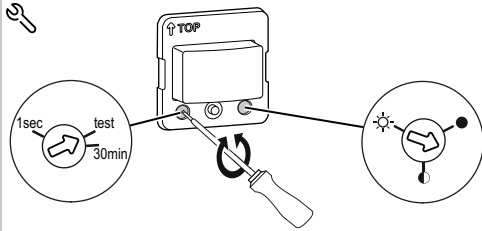
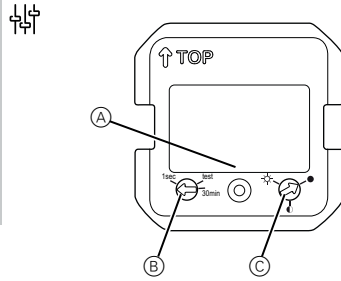
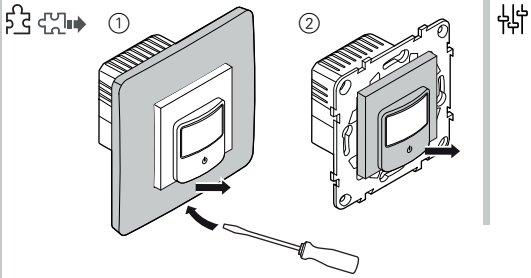
– With extension unit

(A) Mechanical push-button at extension unit connection

– Master/slave mode

(B) Master

(C) Slave



LED 200 W

2200 W

2000 W



1050 VA

C 10 A, 140µF

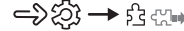
200 W

500 VA

M 1000 VA

Setting the motion sensor

Removing the cover



① Remove the frame.

② Pull the rocker switch off.

Displays and operating elements



A Status LED (red), behind the lens

B Potentiometer overtravel time

C Potentiometer detection brightness

Setting functions



Test mode: test

In test mode, you can check the settings without switching loads. The status LED (A) flashes in test mode if a motion is detected. You can use the switch in test mode to switch connected loads on and off and check the correct installation.

Overtravel time: 1s - 30min

Set an infinitely adjustable overtravel time between 1 second and 30 minutes. The further the potentiometer is turned anticlockwise, the faster the setting increases.

Slave mode: 1s

In slave mode, the motion sensor can switch loads that are connected to another motion sensor (master).

For slave mode, the potentiometer must be set to an overtravel time of 1s.

Detection brightness: ● ● ●

(5 lux, medium brightness, 500 lux)

In automatic mode, the motion sensor only switches connected loads on beneath the set detection brightness.

Operating the motion sensor

Automatic mode

By default, the motion sensor works in automatic mode. Connected loads are automatically switched on and off dependent on motion detection and brightness.

Manual mode



A Switch loads connected to the motion sensor on or off independently of the brightness.

B Switch to automatic mode if the motion sensor does not register a motion for the duration of the set overtravel time (t).

Operating the motion sensor using an extension unit



Using a mechanical push-button connected to the extension unit connection, switch on loads connected to the motion sensor irrespective of the brightness or restart the activated overtravel time before it has elapsed (<t).

If the motion sensor does not register a motion for the duration of the set overtravel time (t), it switches to automatic mode.

What should I do if there is a problem?

Load is not switched on:

- Increase detection brightness.

Load is permanently switched on:

- Reduce overtravel time.

Technical data

Nominal voltage: AC 230 V ~, 50 Hz

Nominal power:

Connecting terminals: Screw terminals for max. 2 x 2.5 mm²
0.5 Nm

Extension unit: Single push-button, unlimited number
max. 50 m

Fuse protection: 16 A circuit breaker

Nominal current: 10 AX, cosφ = 0.6



Dispose of the device separately from household waste at an official collection point. Professional recycling protects people and the environment against potential negative effects.

Schneider Electric Industries SAS

If you have technical questions, please contact the Customer Care Centre in your country.