

## LSD CONTACTORS FOR SWITCHING MOTORS AC3 – 3POLE, SIZE 00



LSDD...



LSDD...-PLC

### SCHRACK-INFO

Auxiliary contact block types LSZD... can be snapped on contactors LSDD.... Contactors for PLC cannot be extended by further auxiliary contacts. Suitable surge suppressor types LSZD0001 to LSZD0004.

DESCRIPTION	COIL VOLTAGE	FREQU/REMARK	ORDER NO.
<b>SIZE 00 – TYPE LSDD</b>			
Contactor AC3:3KW/400V, 1NO	AC24V	50HZ	LSDD0710
Contactor AC3:3KW/400V, 1NC*	AC24V	50HZ	LSDD0720
Contactor AC3:3KW/400V, 1NO	AC110V	50HZ	LSDD0712
Contactor AC3:3KW/400V, 1NC*	AC110V	50HZ	LSDD0722
Contactor AC3:3KW/400V, 1NO	AC230V	50/60HZ	LSDD0713
Contactor AC3:3KW/400V, 1NC*	AC230V	50/60HZ	LSDD0723
Contactor AC3:3KW/400V, 1NO	DC24V		LSDD0715
Contactor AC3:3KW/400V, 1NC*	DC24V		LSDD0725
Contactor AC3:4KW/400V, 1NO	AC24V	50HZ	LSDD0910
Contactor AC3:4KW/400V, 1NC*	AC24V	50HZ	LSDD0920
Contactor AC3:4KW/400V, 1NO	AC110V	50HZ	LSDD0912
Contactor AC3:4KW/400V, 1NC*	AC110V	50HZ	LSDD0922
Contactor AC3:4KW/400V, 1NO	AC230V	50/60HZ	LSDD0913
Contactor AC3:4KW/400V, 1NC*	AC230V	50/60HZ	LSDD0923
Contactor AC3:4KW/400V, 1NO	DC24V		LSDD0915
Contactor AC3:4KW/400V, 1NC*	DC24V		LSDD0925
Contactor AC3:5,5KW/400V, 1NO	AC24V	50HZ	LSDD1210
Contactor AC3:5,5KW/400V, 1NC*	AC24V	50HZ	LSDD1220
Contactor AC3:5,5KW/400V, 1NO	AC110V	50HZ	LSDD1212
Contactor AC3:5,5KW/400V, 1NC*	AC110V	50HZ	LSDD1222
Contactor AC3:5,5KW/400V, 1NO	AC230V	50/60HZ	LSDD1213
Contactor AC3:5,5KW/400V, 1NC*	AC230V	50/60HZ	LSDD1223
Contactor AC3:5,5KW/400V, 1NO	DC24V		LSDD1215
Contactor AC3:5,5KW/400V, 1NC*	DC24V		LSDD1225
<b>SIZE 00 – TYPE LSDD FOR PLC</b>			
Contactor AC3:3KW/400V, 1NO	DC17-30V	no further aux. contacts	LSDD071G
Contactor AC3:3KW/400V, 1NC	DC17-30V	no further aux. contacts	LSDD072G
Contactor AC3:4KW/400V, 1NO	DC17-30V	no further aux. contacts	LSDD091G
Contactor AC3:4KW/400V, 1NC	DC17-30V	no further aux. contacts	LSDD092G
Contactor AC3:5,5KW/400V, 1NO	DC17-30V	no further aux. contacts	LSDD121G
Contactor AC3:5,5KW/400V, 1NC	DC17-30V	no further aux. contacts	LSDD122G

\* Only auxiliary contact block type LSZDH5.. and LSZD05.. possible

## ■ LSD CONTACTORS FOR SWITCHING MOTORS AC3 – 3POLE, SIZE 0



LSD0....

### ■ SCHRACK-INFO

Auxiliary contact and contact block types LSZ0D... can be snapped on. Suitable surge suppressor types LSZD0005, LSZD0006 and LSZ00001 to LSZ00003.

DESCRIPTION	COIL VOLTAGE	FREQU/REMARK	ORDER NO.
<b>SIZE 0 – TYPE LSD0</b>			
Contactor AC3:4KW/400V	AC24V	50HZ	LSD00930
Contactor AC3:4KW/400V	DC24V		LSD00935
Contactor AC3:4KW/400V	AC110V	50HZ	LSD00932
Contactor AC3:4KW/400V	AC230V	50/60HZ	LSD00933
Contactor AC3:5,5KW/400V	AC24V	50HZ	LSD01230
Contactor AC3:5,5KW/400V	DC24V		LSD01235
Contactor AC3:5,5KW/400V	AC110V	50HZ	LSD01232
Contactor AC3:5,5KW/400V	AC230V	50/60HZ	LSD01233
Contactor AC3:7,5KW/400V	AC24V	50HZ	LSD01730
Contactor AC3:7,5KW/400V	DC24V		LSD01735
Contactor AC3:7,5KW/400V	AC110V	50HZ	LSD01732
Contactor AC3:7,5KW/400V	AC230V	50/60HZ	LSD01733
Contactor AC3:7,5KW/400V	AC400V	50HZ	LSD01734
Contactor AC3:11KW/400V	AC24V	50HZ	LSD02530
Contactor AC3:11KW/400V	DC24V		LSD02535
Contactor AC3:11KW/400V	AC110V	50HZ	LSD02532
Contactor AC3:11KW/400V	AC230V	50/60HZ	LSD02533
<b>SIZE 0 – TYPE LSS0 FOR PLC</b>			
Contactor AC3,5,5KW/400V*	DC17-30V		LSS0123H
Contactor AC3:7,5KW/400V*	DC17-30V		LSS0173H
Contactor AC3:11KW/400V*	DC17-30V		LSS0253H

\* Max. 2 pcs. of auxiliary contact type LSZ0D0.. or LSZ0D9.. possible

## ■ LSD CONTACTORS FOR SWITCHING MOTORS AC3 – 3POLE, SIZE 2



LSD2...

### ■ SCHRACK-INFO

Auxiliary contact and contact block types LSZ0D... can be snapped on. Suitable surge suppressor types LSZ20001 for AC 230V.

DESCRIPTION	COIL VOLTAGE	FREQU/REMARK	ORDER NO.
<b>SIZE 2 – TYPE LSD2</b>			
Contactora AC3:15KW/400V	AC24V	50HZ	LSD23230
Contactora AC3:15KW/400V	DC24V		LSD23235
Contactora AC3:15KW/400V	AC110V	50HZ	LSD23232
Contactora AC3:15KW/400V	AC230V	50/60HZ	LSD23233
Contactora AC3:18,5KW/400V	AC24V	50HZ	LSD24030
Contactora AC3:18,5KW/400V	DC24V		LSD24035
Contactora AC3:18,5KW/400V	AC110V	50HZ	LSD24032
Contactora AC3:18,5KW/400V	AC230V	50/60HZ	LSD24033
Contactora AC3:22KW/400V	AC24V	50HZ	LSD25030
Contactora AC3:22KW/400V	DC24V		LSD25035
Contactora AC3:22KW/400V	AC110V	50HZ	LSD25032
Contactora AC3:22KW/400V	AC230V	50/60HZ	LSD25033

## ■ LSD CONTACTORS FOR SWITCHING MOTORS AC3 – 3POLE, SIZE 3



LSD3...

### ■ SCHRACK-INFO

Auxiliary contact and contact block types LSZ0D... and LSZ3D... can be snapped on. Suitable surge suppressor types LSZ20001 for AC 230V.

DESCRIPTION	COIL VOLTAGE	FREQU/REMARK	ORDER NO.
<b>SIZE 3 – TYPE LSD3</b>			
Contactora AC3:30KW/400V	AC24V	50HZ	LSD36530
Contactora AC3:30KW/400V	DC24V		LSD36535
Contactora AC3:30KW/400V	AC110V	50HZ	LSD36532
Contactora AC3:30KW/400V	AC230V	50/60HZ	LSD36533
Contactora AC3:30KW/400V, 2NO+2NC	AC230V	50HZ	LSD36553
Contactora AC3:37KW/400V	AC24V	50HZ	LSD38030
Contactora AC3:37KW/400V	DC24V		LSD38035
Contactora AC3:37KW/400V, 2NO+2NC	AC24V	50HZ	LSD38050
Contactora AC3:37KW/400V	AC110V	50HZ	LSD38032
Contactora AC3:37KW/400V, 2NO+2NC	AC110V	50HZ	LSD38052
Contactora AC3:37KW/400V	AC230V	50/60HZ	LSD38033
Contactora AC3:45KW/400V	AC24V	50HZ	LSD39530
Contactora AC3:45KW/400V	DC24V		LSD39535
Contactora AC3:45KW/400V	AC230V	50/60HZ	LSD39533
Contactora AC3:45KW/400V, 2NO+2NC	AC230V	50/60HZ	LSD39553

## ■ LSD CONTACTORS FOR SWITCHING MOTORS AC3 – 3POLE, SIZE 6/10/12



LSD6115F



LSD6155F



LSD6305F

### ■ SCHRACK-INFO

LSD6115F fitted with box terminals up to 70 mm<sup>2</sup>, all other types without box terminals. Those box terminals are deliverable on request. Auxiliary contact and contact block types LSZ0D... and LSZ3D... can be snapped on. Suitable surge suppressor type LSZ60001.

DESCRIPTION	COIL VOLTAGE	FREQU/REMARK	ORDER NO.
<b>SIZE 6 – TYPE LSD6</b>			
Contactor AC3:55KW/400V, 2NO+2NC (with box terminals)	UC220-240V	40-60HZ	LSD6115F
Contactor AC3:75KW/400V, 2NO+2NC	UC220-240V	40-60HZ	LSD6155F
Contactor AC3:90KW/400V, 2NO+2NC	UC220-240V	40-60HZ	LSD6195F
<b>SIZE 10 – TYPE LSDE</b>			
Contactor AC3:110KW/400V, 2NO+2NC	UC220-240V	40-60HZ	LSDE225F
Contactor AC3:132KW/400V, 2NO+2NC	UC220-240V	40-60HZ	LSDE265F
Contactor AC3:160KW/400V, 2NO+2NC	UC220-240V	40-60HZ	LSDE305F
<b>SIZE 12 – TYPE LSDG</b>			
Contactor AC3:200KW/400V, 2NO+2NC	UC220-240V	40-60HZ	LSDG415F
Contactor AC3:250KW/400V, 2NO+2NC	UC220-240V	40-60HZ	LSDG515F

## ■ LSD VACUUM CONTACTORS AC3 – 3POLE, SIZE 14



LSDH...

### ■ SCHRACK-INFO

Contactors cannot be extended by further auxiliary contacts. Surge suppressor by means of a varistor circuit is included in the scope of supply.

DESCRIPTION	COIL VOLTAGE	FREQU/REMARK	ORDER NO.
<b>SIZE 14 – TYPE LSDH</b>			
Contactor AC3:335KW/400V, 4NO+4NC	UC200-240V	50HZ	LSDH63G3
Contactor AC3:335KW/1000V, 4NO+4NC	UC200-240V	50HZ	LSDH64G3
Contactor AC3:450KW/400V, 4NO+4NC	UC200-240V	50HZ	LSDH82G3
Contactor AC3:450KW/1000V, 4NO+4NC	UC200-240V	50HZ	LSDH83G3

## LSW REVERSING CONTACTOR ASSEMBLIES AC3, SIZE 00/0/2/3



LSWD...



LSW0...

### SCHRACK-INFO

For higher ratings or customer assembly see components listed on pages onwards.

DESCRIPTION	COIL VOLTAGE	FREQU/REMARK	ORDER NO.
<b>SIZE 00 – TYPE LSWD</b>			
Reversing Assembly AC3, 3kW/400V	230V	50/60HZ	LSWD0733
Reversing Assembly AC3, 4kW/400V	230V	50/60HZ	LSWD0933
Reversing Assembly AC3, 5,5kW/400V	230V	50/60HZ	LSWD1233
<b>SIZE 0 – TYPE LSW0</b>			
Reversing Assembly AC3, 5,5kW/400V	230V	50/60HZ	LSW01233
Reversing Assembly AC3, 7,5kW/400V	230V	50/60HZ	LSW01733
Reversing Assembly AC3, 11kW/400V	230V	50/60HZ	LSW02533
<b>SIZE 2 – TYPE LSW2</b>			
Reversing Assembly AC3, 15kW/400V	230V	50/60HZ	LSW23233
Reversing Assembly AC3, 18,5kW/400V	230V	50/60HZ	LSW24033
Reversing Assembly AC3, 22kW/400V	230V	50/60HZ	LSW25033
<b>SIZE 3 – TYPE LSW3</b>			
Reversing Assembly AC3, 30kW/400V	230V	50/60HZ	LSW36533
Reversing Assembly AC3, 37kW/400V	230V	50/60HZ	LSW38033
Reversing Assembly AC3, 45kW/400V	230V	50/60HZ	LSW39533

## LSY WYE-DELTA CONTACTOR ASSEMBLIES AC3, SIZE 00/0/2



LSY03233

### SCHRACK-INFO

For higher ratings or customer assembly see components listed on pages onwards.

DESCRIPTION	COIL VOLTAGE	FREQU/REMARK	ORDER NO.
<b>SIZE 00 – TYPE LSYD</b>			
WYE-Delta Assembly AC3, up to 7,5kW/400V	230V	50/60HZ	LSYD1733
<b>SIZE 0 – TYPE LSY0</b>			
WYE-Delta Assembly AC3, up to 15kW/400V	230V	50/60HZ	LSY03233
<b>SIZE 2 – TYPE LSY2</b>			
WYE-Delta Assembly AC3, up to 22kW/400V	230V	50/60HZ	LSY25033

## LSR CONTACTORS FOR SWITCHING AC1 LOADS – 4POLE, SIZE 00/0



LSR0...

### SCHRACK-INFO

Auxiliary contacts, contact blocks and surge suppressors are identical to those for contactors LSD of same size.

DESCRIPTION	COIL VOLTAGE	FREQU/REMARK	ORDER NO.
<b>SIZE 00 – TYPE LSRD</b>			
Contactor AC1:18A/690V	AC24V	50/60HZ	LSRD1840
Contactor AC1:18A/690V	DC24V		LSRD1845
Contactor AC1:18A/690V	AC230V	50/60HZ	LSRD1843
Contactor AC1:22A/690V	AC24V	50/60HZ	LSRD2240
Contactor AC1:22A/690V	DC24V		LSRD2245
Contactor AC1:22A/690V	AC230V	50/60HZ	LSRD2243
<b>SIZE 0 – TYPE LSR0</b>			
Contactor AC1:35A/690V	AC24V	50HZ	LSR03540
Contactor AC1:35A/690V	DC24V		LSR03545
Contactor AC1:35A/690V	AC230V	50/60HZ	LSR03543
Contactor AC1:40A/690V	AC24V	50HZ	LSR04040
Contactor AC1:40A/690V	DC24V		LSR04045
Contactor AC1:40A/690V	AC230V	50/60HZ	LSR04043

## LSR CONTACTORS FOR SWITCHING AC1 LOADS – 4POLE, SIZE 2/3



LSR3...

### SCHRACK-INFO

Auxiliary contacts, contact blocks and surge suppressors are identical to those for contactors LSD of same size.

DESCRIPTION	COIL VOLTAGE	FREQU/REMARK	ORDER NO.
<b>SIZE 2 – TYPE LSR2</b>			
Contactor AC1:60A/690V	AC24V	50HZ	LSR26040
Contactor AC1:60A/690V	DC24V		LSR26045
Contactor AC1:60A/690V	AC230V	50/60HZ	LSR26043
<b>SIZE 3 – TYPE LSR3</b>			
Contactor AC1:110A/690V	AC24V	50HZ	LSR31140
Contactor AC1:110A/690V	DC24V		LSR31145
Contactor AC1:110A/690V	AC230V	50/60HZ	LSR31143
Contactor AC1:140A/690V	AC24V	50HZ	LSR31440
Contactor AC1:140A/690V	DC24V		LSR31445
Contactor AC1:140A/690V	AC230V	50/60HZ	LSR31443

## LSK CAPACITOR SWITCHING CONTACTORS



LSKD17B3

### SCHRACK-INFO

- Technical data according to IEC 60 947; EN 60 947 (VDE 0660)
- The contactors are suitable for use in any climate
- They are finger-safe according to EN 50274

### TECHNICAL DATA

The LSK capacitor contactors are special version of the size 00-3 ALEA contactors. The capacitors are precharged by means of the mounted leading NO contacts and resistors; only then do the main contacts close. This prevents disturbances in the network and welding of the contactors. Only discharged capacitors are permitted to be switched on with capacitor contactors. The auxiliary contact block which is snapped onto the capacitor contactor contains the three leading NO contacts and in the case of size 00 one standard NC contact and in the case of size 0 and size 3 one standard NO contact, which is unassigned. Size 500 also contains another unassigned NO contact in the basic unit. In addition, a 2-pole auxiliary contact block can be mounted laterally on the LSK3 capacitor contactors (1 NO + 1 NC versions) type LSZ0D711. The fitting of auxiliary contacts for LSKD and LSKO is not expandable.

CAPACITOR RATING 400V/INCLUDED AUXILIARY CONTACTS	COIL VOLTAGE	FREQU/REMARK	ORDER NO.
<b>SIZE 00</b>			
12,5 kVar/1 NO + 1 NC	AC230V	50/50Hz	LSKD17B3
<b>SIZE 0</b>			
25 kVar/1 NO	AC230V	50/50Hz	LSK03213
<b>SIZE 3</b>			
50 kVar/1 NO	AC230V	50/50Hz	LSK36213

## LA3K CAPACITOR SWITCHING CONTACTORS



LA3K181

### SCHRACK-INFO

- For use in detuned or non-detuned capacitor units.
- Technical data according to EN 60 947-4-1; EN 60 947-5-1; VDE 0660

### TECHNICAL DATA

Specification: The capacitor switching contactors K3...K are suitable for switching low-inductive and low-loss capacitors in capacitor banks (IEC70 & 831, VDE 0560) with and without reactors. Capacitor switching contactors are fitted with early make contacts and damping resistors to reduce the value of the make current to  $<70 \times I_e$ .

Operating conditions: Capacitor switching contactors are protected against contact welding for a prospective make current of  $200 \times I_e$ . Fuse rating approx.  $1,6$  to  $2,5 \times I_e$ , type gL/gG.

CAPACITOR RATING 400V/INCLUDED AUXILIARY CONTACTS	COIL VOLTAGE	FREQU/REMARK	ORDER NO.
12,5 kVar/1 NO	AC220-240V	50Hz	LA3K1813
12,5 kVar/1 NC	AC220-240V	50Hz	LA3K1823
20 kVar/ 0	AC220-240V	50Hz	LA3K2433
25 kVar/ 0	AC220-240V	50Hz	LA3K3233
33,3 kVar/ 0	AC220-240V	50Hz	LA3K5033
50 kVar/ 0	AC220-240V	50Hz	LA3K6233
60 kVar/ 0	AC220-240V	50Hz	LA3K7433
75 kVar/ 0	AC220-240V	50Hz	LA3K9033
90 kVar/ 0	AC220-240V	50Hz	LA3K1133

## AUXILIARY CONTACTS FOR CAPACITOR SWITCHING CONTACTORS LA3K



LA1901..

CAPACITOR RATING 400V/INCLUDED AUXILIARY CONTACTS	COIL VOLTAGE	FREQU/REMARK	ORDER NO.
<b>AUXILIARY CONTACTS FOR CAPACITY SWITCHING CONTACTORS LA3K</b>			
AUXILIARY CONTACT for LA3K18, 1NC, snap on front	6A/230VAC	DIN EN 5005/50012	LA190135
AUXILIARY CONTACT for LA3K24...11, 1NO+1NC, side mounted	3A/230VAC	DIN EN 5005	LA190134
AUXILIARY CONTACT for LA3K...., 1NO, snap on front	3A/230VAC	DIN EN 5005/50012	LA190100
AUXILIARY CONTACT for LA3K...., 1NC, snap on front	3A/230VAC	DIN EN 5005/50012	LA190101

## LSHD AUXILIARY CONTACTORS AC15 – 4POLE, SIZE 00



LSHD...



LSHD....-PLC

### SCHRACK-INFO

Auxiliary contact types LSZD05.. and LSZDH5.. can be snapped on. Contactors for PLC cannot be extended by further auxiliary contacts. Suitable surge suppressor types LSZD0001 to LSZD0004.

DESCRIPTION	COIL VOLTAGE	FREQU/REMARK	ORDER NO.
<b>SIZE 00 – TYPE LSHD</b>			
Contactor AC15: 6A/230V, 4NO	AC24V	50HZ	LSHD0670
Contactor AC15: 6A/230V, 4NO	DC24V		LSHD0675
Contactor AC15: 6A/230V, 4NO	AC230V	50/60HZ	LSHD0673
Contactor AC15: 6A/230V, 3NO+1NC	AC24V	50HZ	LSHD0680
Contactor AC15: 6A/230V, 3NO+1NC	DC24V		LSHD0685
Contactor AC15: 6A/230V, 3NO+1NC	AC230V	50/60HZ	LSHD0683
Contactor AC15: 6A/230V, 2NO+2NC	AC24V	50HZ	LSHD0690
Contactor AC15: 6A/230V, 2NO+2NC	DC24V		LSHD0695
Contactor AC15: 6A/230V, 2NO+2NC	AC230V	50/60HZ	LSHD0693
<b>SIZE 00 – TYPE LSHD FOR PLC</b>			
Contactor*, AC15: 6A/230V, 4NO	DC17-30V	no further aux. contacts	LSHD067N
Contactor with diode assembly, AC15: 6A/230V, 4NO	DC17-30V	no further aux. contacts	LSHD067G
Contactor*, AC15: 6A/230V, 3NO+1NC	DC17-30V	no further aux. contacts	LSHD068N
Contactor with diode assembly, AC15: 6A/230V, 3NO+1NC	DC17-30V	no further aux. contacts	LSHD068G
Contactor*, AC15: 6A/230V, 2NO+2NC	DC17-30V	no further aux. contacts	LSHD069N
Contactor with diode assembly, AC15: 6A/230V, 2NO+2NC	DC17-30V	no further aux. contacts	LSHD069G

\* Varistors or surge suppressor diodes can be plugged in



## AUXILIARY CONTACTS AND CONTACT BLOCKS FOR LSDD OR LSSD, SIZE 00



LSZDD213



LSZD0510

DESCRIPTION	FREQU/REMARK	ORDER NO.
Auxiliary Contact Block for size 00, 1NO, cable entry from below	DIN EN 50005	LSZD0510
Auxiliary Contact Block for size 00, 1NC, cable entry from below	DIN EN 50005	LSZD0501
Auxiliary Contact Block for size 00, 1NC <sup>1)</sup>	DIN EN 50012	LSZDD201
Auxiliary Contact Block for size 00, 1NO+2NC <sup>1)</sup>	DIN EN 50012	LSZDD212
Auxiliary Contact Block for size 00, 1NO+3NC <sup>1)</sup>	DIN EN 50012	LSZDD213
Auxiliary Contact Block for size 00, 2NO+2NC <sup>1)</sup>	DIN EN 50012	LSZDD222

<sup>1)</sup> Auxiliary contact blocks for use with contactors type LSDD.... or LSSD.... with one NO included, for contactors type LSDD.... or LSSD.... with one NC included use auxiliary contact blocks type LSZDH5.. (see item below)

## AUXILIARY CONTACTS AND CONTACT BLOCKS FOR LSDD, LSSD OR LSDD, SIZE 00



LSZDH522



LSZD0510

DESCRIPTION	FREQU/REMARK	ORDER NO.
Auxiliary Contact Block for size 00, 1NO, cable entry from below	DIN EN 50005	LSZD0510
Auxiliary Contact Block for size 00, 1NC, cable entry from below	DIN EN 50005	LSZD0501
Auxiliary Contact Block for size 00, 4NO <sup>2)</sup>	DIN EN 50005	LSZDH540
Auxiliary Contact Block for size 00, 3NO+1NC <sup>2)</sup>	DIN EN 50005	LSZDH531
Auxiliary Contact Block for size 00, 2NO+2NC <sup>2)</sup>	DIN EN 50005	LSZDH522

<sup>2)</sup> Auxiliary contact blocks for use with contactors type LSDD.... or LSSD.... with one NC included, for contactors type LSDD.... or LSSD.... with one NO included use auxiliary contact blocks type LSZDD2.. (see item above)

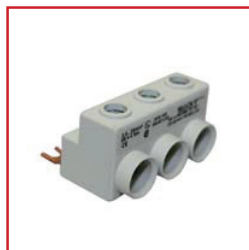
## PARALLEL CONNECTORS (STAR JUMPER) AND FEED TERMINAL, SIZE 00



LSZDY002



LSZDD003



LSZDD001

DESCRIPTION	ORDER NO.
<b>PARALLEL CONNECTOR</b>	
Parallel connector, 25mm <sup>2</sup> for size 00, 3pol. + terminal	LSZDD003
Parallel connector, 25mm <sup>2</sup> for size 00, 4pol. + terminal	LSZDD004
Parallel connector, star jumper for size 00, 3pol. (can be shortened by 1 pole)	LSZDY002
<b>FEED TERMINAL</b>	
Feed terminal, 6mm <sup>2</sup> for size 00, 3pol. + 3 terminals	LSZDD001

## WIRING SETS\*, MECHANICAL INTERLOCK AND CONNECTION CLIPS, SIZE 00



LSZDW002

### SCHRACK-INFO

By using the interlock link, the overall width of the e.g. reversing assembly is not increased (0 mm clearance between the contactors).

DESCRIPTION	ORDER NO.
Wiring set for reversing contactor assemblies, size 00*	LSZDW001
Wiring set for WYE-Delta contactor assemblies, size 00	LSZDY001
Connection clips for two contactors, size 00*	LSZDW002

\* Contains two connection clips and one mechanical interlock link

## WYE-DELTA TIMERS



LSZD0102

### SCHRACK-INFO

Timers have a fixed dead interval of 50 ms (between Wye- and Delta-state).

DESCRIPTION	COIL VOLTAGE	FREQU/REMARK	ORDER NO.
WYE-Delta timer, 20s (timedelay -20s)	24/240VAC 24 VDC	50/60Hz	LSZD0101
WYE-Delta timer, 60s (timedelay -60s)	24/240VAC 24 VDC	50/60Hz	LSZD0102

## CONNECTION LINKS FOR CONTACTORS AND MOTOR PROTECTION SWITCHES, SIZE 00



LSZDD005

DESCRIPTION	COIL VOLTAGE	ORDER NO.
Connection link for contactor size 00 and motor protection switch, size 00	AC-DC operated	LSZDD005
Connection link for contactor size 00 and motor protection switch, size 0	AC-DC operated	LSZDD006

## ■ SOLDER PIN ADAPTER, SIZE 00



LSZDD002

DESCRIPTION	ORDER NO.
Solder pin adapter for size 00	LSZDD002

## ■ SURGE SUPPRESSORS (PLUG IN TYPE), SIZE 00



LSZD0004

DESCRIPTION	COIL VOLTAGE	ORDER NO.
Varistor for size 00	AC24-48V; DC24-70V	LSZD0001
Varistor for size 00	AC127-240V; DC150-250V	LSZD0002
Surge suppressor for size 00	AC127-240V; DC150-250V	LSZD0003
Surge suppressor diode for size 00	DC12-250V	LSZD0004

## ■ AUXILIARY CONTACTS (SNAP ON FRONT), SIZE 0-12



LSZOD001



LSZOD010

DESCRIPTION	FREQU/REMARK	ORDER NO.
Auxiliary Contact for size 0-12, 1NC	DIN EN 50005/50012	LSZOD001
Auxiliary Contact for size 0-12, 1NO	DIN EN 50005/50012	LSZOD010
Auxiliary Contact for size 0-12, 1NC-delayed	DIN EN 50005/50012	LSZOD901
Auxiliary Contact for size 0-12, 1NO-early make	DIN EN 50005/50012	LSZOD910

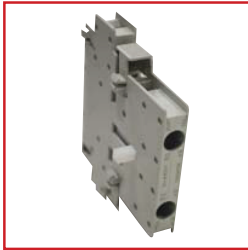
## AUXILIARY CONTACT BLOCKS (SNAP ON FRONT), SIZE 0-12



LSZ0D122

DESCRIPTION	FREQU/REMARK	ORDER NO.
Auxiliary Contact Block for size 0-12, 1NO+3NC	DIN EN 50012	LSZ0D113
Auxiliary Contact Block for size 0-12, 2NO+2NC	DIN EN 50012	LSZ0D122
Auxiliary Contact Block for size 0-12, 3NO+1NC	DIN EN 50012	LSZ0D131
Auxiliary Contact Block for size 0-12, 4NO	DIN EN 50005	LSZ0D140F
Auxiliary Contact Block for size 0-12, 3NO+1NC	DIN EN 50005	LSZ0D131F
Auxiliary Contact Block for size 0-12, 2NO+2NC	DIN EN 50005	LSZ0D122F
Auxiliary Contact Block for size 0-12, 4NC	DIN EN 50005	LSZ0D104F

## AUXILIARY CONTACT BLOCKS (SIDE MOUNTED), SIZE 0-12



LSZ0D711

DESCRIPTION	FREQU/REMARK	ORDER NO.
Auxiliary Contact, sidemounted for size 0-12, 1NO+1NC, first position	DIN EN 50012	LSZ0D711
Auxiliary Contact, sidemounted for size 3-12, 1NO+1NC, second position	DIN EN 50012	LSZ3D811

## MECHANICAL INTERLOCKS, SIZE 0-12



LSZ0W002

DESCRIPTION	ORDER NO.
Mechanical interlock for contactors size 0-3 (including 2NC auxiliary contacts)	LSZ0W002
Mechanical interlock for contactors size 6-12	LSZ6W001

## ■ WIRING SETS FOR REVERSING CONTACTOR ASSEMBLIES, SIZE 0-12

DESCRIPTION	ORDER NO.
Wiring set for reversing assemblies for size 0	LSZ0W001
Wiring set for reversing assemblies for size 2, including connection clips	LSZ2W001
Wiring set for reversing assemblies for size 3, including connection clips	LSZ3W001
Wiring set for reversing assemblies for size 6	LSZ6W002
Wiring set for reversing assemblies for size 10	LSZEW001
Wiring set for reversing assemblies for size 12	LSZGW001

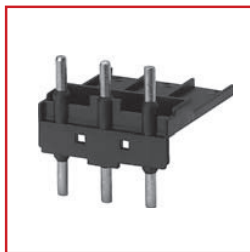
## ■ WIRING SETS FOR YD-ASSEMBLIES AND YD-ACCESSORIES, SIZE 0-3

DESCRIPTION	ORDER NO.
Wiring set for YD-assemblies, size 0, including mech.interlock and connection clips	LSZ0Y001
Wiring set for YD-assemblies, size 2-2-0	LSZ2Y004
Wiring set for YD-assemblies, size 2-2-2	LSZ2Y003
Mountingplate for YD-assemblies, size 2-2-0	LSZ2Y001
Mountingplate for YD-assemblies, size 2-2-2	LSZ2Y002

## ■ CONNECTION LINKS FOR CONTACTORS AND MOTOR PROTECTION SWITCHES, SIZE 0-3



LSZ0D002



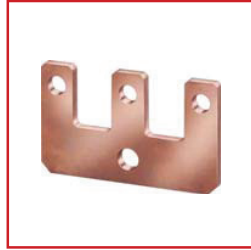
LSZ2D004

DESCRIPTION	COIL VOLTAGE	ORDER NO.
Connection link for contactor size 0 and BES0	AC operating assemblies	LSZ0D002
Connection link for contactor size 0 and BES0	DC operating assemblies	LSZ0D004
Connection link for contactor size 2 and BES2	AC operating assemblies	LSZ2D004
Connection link for contactor size 2 and BES2	DC operating assemblies	LSZ2D005
Connection link for contactor size 3 and BES3	AC operating assemblies	LSZ3D004
Connection link for contactor size 3 and BES3	DC operating assemblies	LSZ3D003

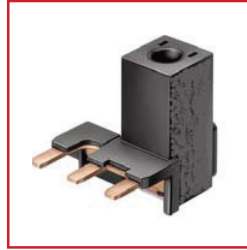
## PARALLEL CONNECTORS (STAR JUMPER) AND FEED TERMINALS, SIZE 0-12



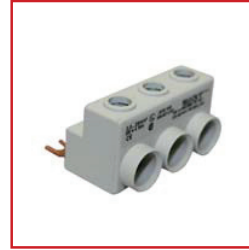
LSZ0Y002



LSZ6Y003



LSZ2D003



BEZ00116

### SCHRACK-INFO

Star jumper size 0-3 can be reduced by 1 pole\*. For touch-protection of parallel connectors size 6 use LSZ6D002, for size 10 and size 12 use LSZED002.

DESCRIPTION	ORDER NO.
<b>PARALLEL CONNECTOR</b>	
Parallel connector, 35mm <sup>2</sup> for size 0, 3pol. + terminal	LSZ0D003
Parallel connector, star jumper for size 0, 3pol.*	LSZ0Y002
Parallel connector; 95mm <sup>2</sup> for size 2, 3pol.+terminal	LSZ2D003
Parallel connector, star jumper for size 2, 3pol.*	LSZ2Y005
Parallel connector, star jumper for size 3, 3pol.*	LSZ3Y004
Parallel connector, star jumper for size 6, 3pol. (with bore diameter 10,5mm)	LSZ6Y003
Parallel connector, star jumper for size 10, 12, 3pol. (with bore diameter 12,5mm)	LSZEY003
<b>FEED TERMINALS</b>	
Feed terminal, 25mm <sup>2</sup> for size 0, 3pol. + 3 terminals	BEZ00116
Feed terminal, 50mm <sup>2</sup> for size 2, 3pol. + 3 terminals	BEZ00216
Feed terminal, 95mm <sup>2</sup> for size 3, 1pol. + terminal	LSZ3D001

## SURGE SUPPRESSORS, SIZE 0-12



LSZ00002

### SCHRACK-INFO

Up to size 3, these devices can be snapped in either at the top (assemblies with overload relays) or at the bottom (assemblies with MPS) of the contactor. Sizes 6-12: snapping in is only possible at the top of contactor.

DESCRIPTION	COIL VOLTAGE	ORDER NO.
Surge suppressor, diode assembly for size 0, top mounted	DC24V	LSZD0005
Surge suppressor, diode assembly for size 0, bottom mounted	DC24V (marked with "+" and "-")	LSZD0006
Varistor for size 0	AC24-48V; DC24-70V	LSZ00001
Varistor for size 0	AC127-240V; DC150-250V	LSZ00002
Surge suppressor, RC for size 0	AC127-240V; DC150-250V	LSZ00003
Surge suppressor, RC for size 2-3	AC127-240V; DC150-250V	LSZ20001
Surge suppressor, RC for size 6-12	AC127-240V; DC150-250V	LSZ60001

## CONNECTION CLIPS FOR CONTACTORS, SIZE 0-3



LSZ2W003



LSZ2D001

### SCHRACK-INFO

2 pieces of clips are necessary for 1 contactor-assembly (2 contactors).

DESCRIPTION	ORDER NO.
Connection clip, for contactors 3/4pole, size 0 to 0 (contactors without interlock)	LSZ0W003
Connection clip, for contactors 3/4pole, size 0 to 0 (interlocked contactors - clearance 10 mm)	LSZ0W004
Connection clip, for contactors 4pole, size 2 to 2 (interlocked contactors - clearance 10 mm)	LSZ2W002
Connection clip, for contactors 4pole, size 3 to 3 (interlocked contactors - clearance 10 mm)	LSZ3W002
Connection clip, for contactors 3pole, size 2/3/6 to 2/3/6 (interlocked contactors - clearance 10 mm)	LSZ2W003
Connection clip, for contactors 3/4pole, size 2/3 (contactors without interlock)	LSZ2D001

## MECHANICAL LATCHING BLOCK, SIZE 0-2



LSZ00113

### SCHRACK-INFO

Contactors fitted with this latching block will remain "ON" in case of control-voltage failure until the latching block is resetted by a 24 VAC DC impuls.

DESCRIPTION	COIL VOLTAGE	ORDER NO.
Mechanical latching block for size 0-2, remains "ON" if voltage fails	24VACDC	LSZ00113

## TERMINAL COVERS, SIZE 2-14



LSZ6D001



LSZ6D002

### SCHRACK-INFO

Additional covers for contactors with box terminals size 6-12 on request.

DESCRIPTION	ORDER NO.
Terminal Cover for size 2* (additional cover, to be fitted on the box terminals)	LSZ2D002
Terminal Cover for size 3* (additional cover, to be fitted on the box terminals)	LSZ3D002
Terminal Cover for size 6* for contactors with cable lug or busbar connection (38 mm)	LSZ6D001
Terminal Cover - short version for size 6* for contactor assemblies (100 mm)	LSZ6D002
Terminal Cover for size 10*/12* for contactors with cable lug or busbar connection (120 mm)	LSZED001
Terminal Cover - short version for size 10*/12* for contactors with cable lug or busbar connection (42 mm)	LSZED002
Terminal Cover for size 14* for contactors with cable lug or busbar connection	LSZHD001

\* Order 2 pcs. for one complete contactor, order 1 pc. just for one side (up side or bottom side) of contactor