



JDR



GU10



25°

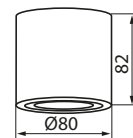
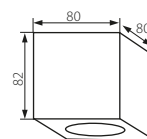
## DUCE AL

modern

DESIGN



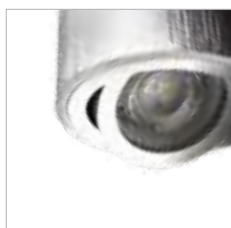
Přisazené bodové svítidlo  
Prisadené bodové svietidlo



DUCE AL-DTL50



DUCE AL-DT050



220-240V~  
50/60Hz

[W]  
max 25



[mm²]  
3x (1-2,5)

IP  
20



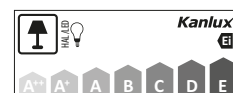
ERC

CE

**Kanlux**



DUCE AL-DTL50	19950
DUCE AL-DT050	19951



CZ

hliník  
těleso svítidla: kartáčovaný hliník

SK

hliník  
teleso svietidla: kartáčovaný hliník