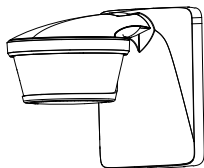


## EN Motion detectors

theLuxa P220 WH	1010605
theLuxa P220 BK	1010606
theLuxa P300 WH	1010610
theLuxa P300 BK	1010611



## 1. Basic safety information 3

## 2. Proper use 3

### Disposal 3

## 3. Description 4

## 4. Connection 4

## 5. Installation 5

### Dismounting 10

### Installation instructions 10

## 6. Walking test and alignment 12

### Align motion detector with sensor head 12

<b>7. Using cover clips</b>	<b>13</b>
<b>8. Setting</b>	<b>14</b>
Setting the brightness (lux)	14
Setting the time (min)	15
Setting "twilight switch" function D	16
Setting the sensitivity (meters)	16
<b>9. Settings with remote control</b>	<b>17</b>
Settings using the Senda P (9070910)	17
Settings by using the Senda S (9070911)	19
<b>10. Technical data</b>	<b>20</b>
<b>11. Contact</b>	<b>21</b>



# 1. Basic safety information



**WARNING**

**Danger of death through electric shock or fire!**

- Installation should only be carried out by a qualified electrician!

- The device conforms with EN 60669-2-1 if correctly installed
- IP 55/54 according to EN 60529 (depending on type of installation)

## 2. Proper use

- Motion detector for automatic lighting control dependent on presence and brightness
- Suitable for external wall or ceiling installation
- Suitable for entrances, garages, gardens, corridors, parks, etc.
- Only intended for installation outside of arm's reach

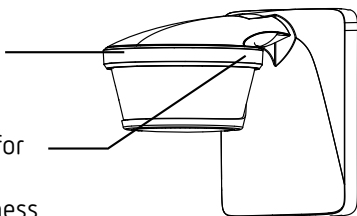
## Disposal

- Dispose of device in environmentally sound manner.

## 3. Description

Motion detector  
with sensor head

3 potentiometers for  
setting  
time (min), brightness  
(lux) and sensitivity  
(metres)



## 4. Connection

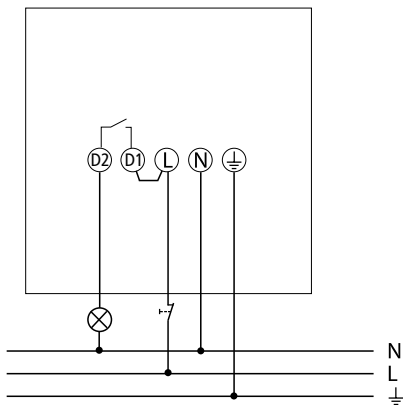


**WARNING**

**Danger of death through electric shock or fire!**

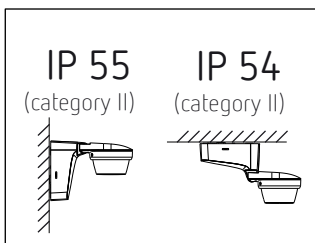
- Installation should only be carried out by a qualified electrician!

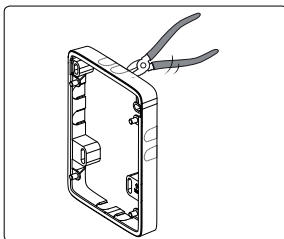
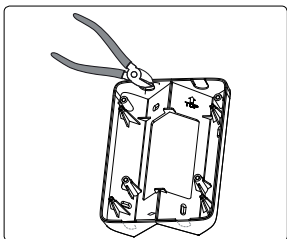
- Disconnect power source!
- Ensure device cannot be switched on!
- Check absence of voltage!
- Earth and bypass!
- Cover or shield any adjacent live components.
- D1, D2: Suited for switching FELV or a voltage of the same phases as L



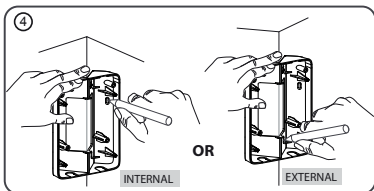
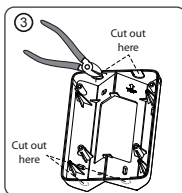
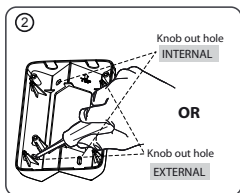
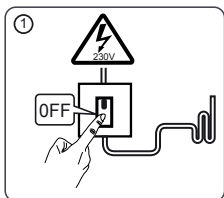
The device can be manually activated with a circuit breaker. After releasing the button (return of power) the device switches on (for at least 40 secs or for the time set on the device).

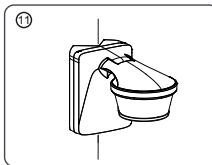
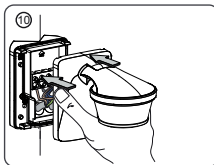
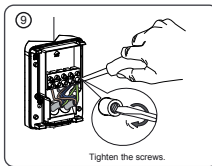
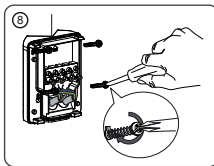
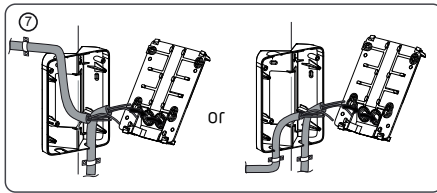
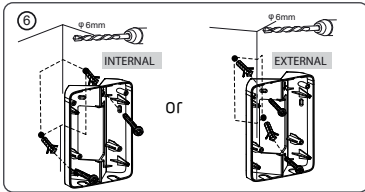
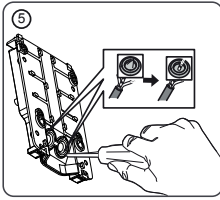
## 5. Installation

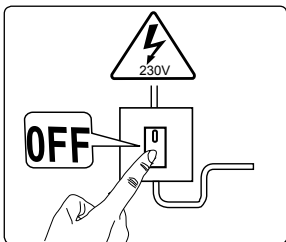




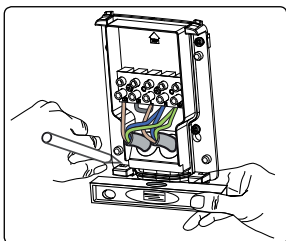
- If applicable, use optional corner bracket (9070904, 9070905) or spacer frame (9070908, 9070909) for flexible installation as well as cable entry from side or top/bottom.



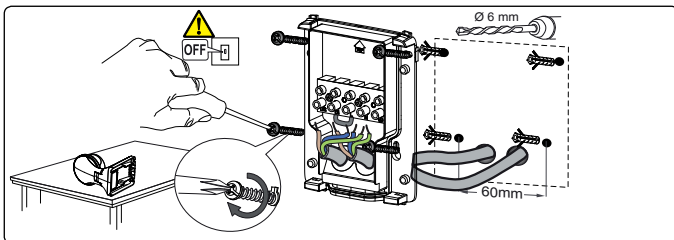




- Disconnect power source.



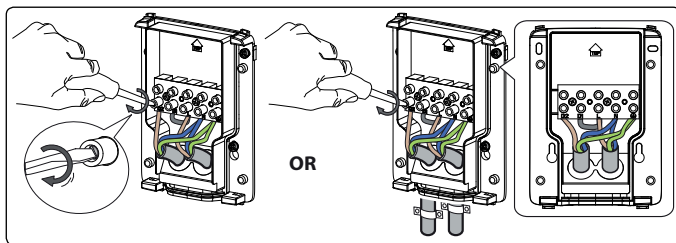
- Make marks for the holes on the wall (with enclosed drill template/base).
- Drill holes.



- Feed cable through the seal of the base.
- Fasten base (and spacer frame) to the wall.



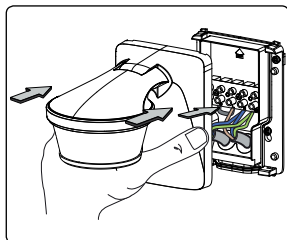




<b>L</b>	Phase	brown
<b>N</b>	Neutral conductor	blue
	Earthing conductor	green/yellow

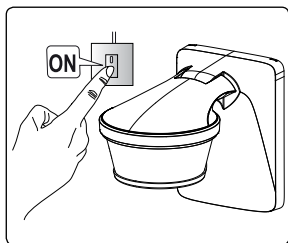
<b>D1, D2</b>	Relay contact	brown
<b>N</b>		blue
		green/yellow

- Connect the individual wires to the appropriate terminal.
- Tighten screws.



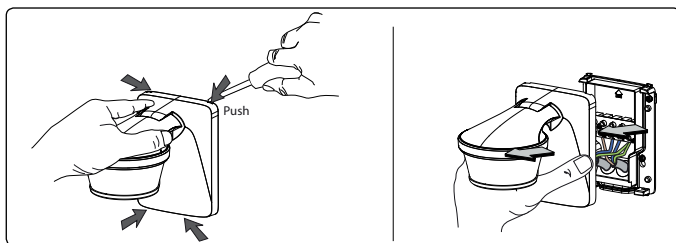
- Plug motion detector onto base and engage.





- Connect motion detector to power supply.

## Dismounting

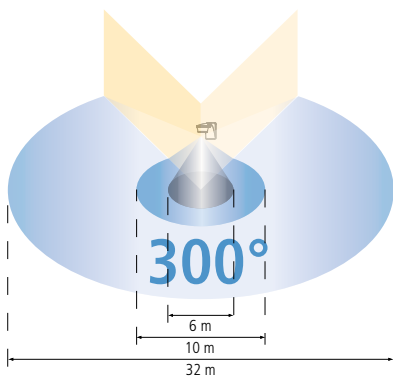
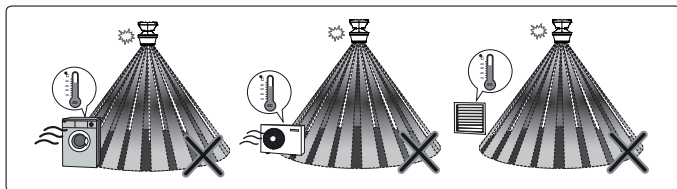


- Using the screwdriver, carefully loosen the upper and lower snap-fits and pull the device away in a forward direction.

## Installation instructions

As the detector reacts to variations in temperature, avoid the following situations:

- Do not direct motion detectors at objects with highly-reflective surfaces such as mirrors, etc.
- Do not install the motion detector near heat sources, such as heating outlets, air conditioning systems, lamps, etc.
- Do not direct the motion detector at objects that move in the wind, such as curtains, large plants, etc.
- Pay attention to the direction of motion during the test run.



- recommended installation height: 2 – 4 m
- Transverse detection area: 16 m (transversal to the detector)
- Frontal detection area: 5 m (directly approaching the detector)
- Detection angle: 220° or 300°



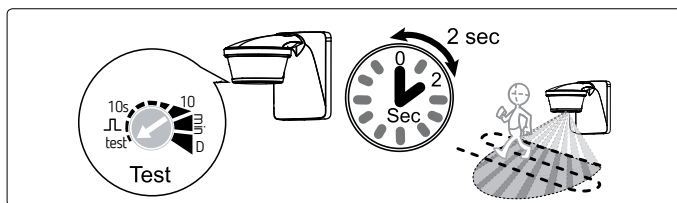
## 6. Walking test and alignment

The walking test is used to test the detection area and to restrict it if necessary.

- ▶ Set the potentiometer time (min) to test.

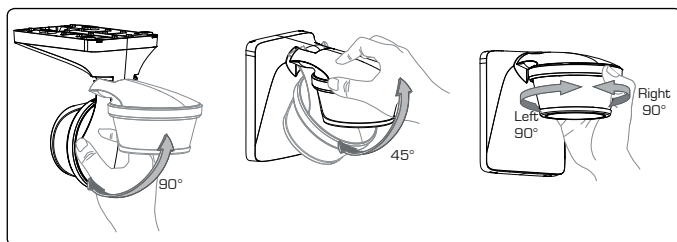
The motion detector now only reacts to movements (independent of brightness).

- ▶ Walk through the detection area at a right angle. After the motion detector has detected a movement, it switches on for 2 s.
- ▶ Pay attention to the direction of motion during the test.

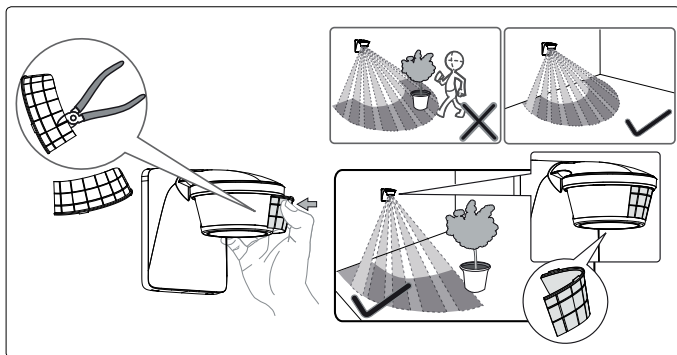


### Align motion detector with sensor head

The sensor head can be turned by 45° downwards, 90° upwards, and 90° to the left and right.



## 7. Using cover clips

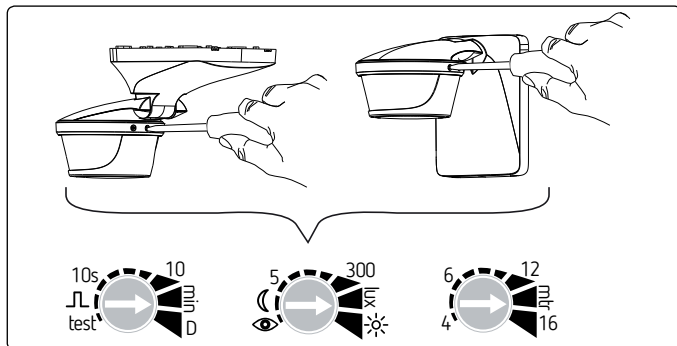


- Use the supplied clips, to adjust the motion detector to the desired detection area.
- Remove the required section of the clips by using pliers or the like.
- Then place on the lens and screw it in.
- When required, use the provided double sided adhesive tape for fastening the cover clips.



## 8. Setting

The motion detector has 3 potentiometers for setting time (min.), brightness (lux) and sensitivity (metres), etc.

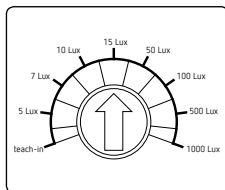
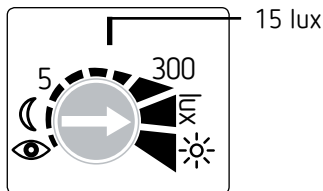


### Setting the brightness (lux)



You can set different brightness values (lux) with the potentiometer.

If you want to change the preset brightness (15 lux default)

- Set the potentiometer to the desired brightness (5 – 1000 lux).



or want a specific brightness value to be learned using the teach-in function

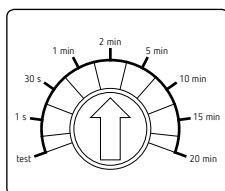
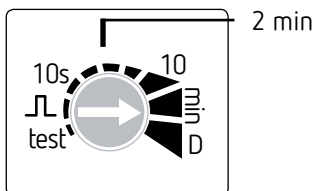
- At the desired brightness, set the potentiometer to . The new value will be learned after 15 s.
- Leave the potentiometer at position .

## Setting the time (min)


If the motion detector detects no further movement, it switches off after the set time.

If you want to change the preset time (2 min default)

- Set the potentiometer to the desired time (1 s - 20 min).



If you want to use the pulse function (e.g. for a staircase light timer switch)

- Set the potentiometer to . The motion detector is switched on for < 1 s, then off for 9 s. If it detects a movement again, it switches on again for 1 s.

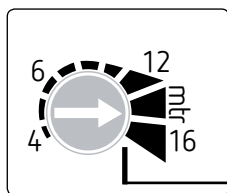
## Setting "twilight switch" function D

- Set potentiometer to position D. Motion detector only reacts to brightness and is always on when the set brightness value has not been reached.

## Setting the sensitivity (meters)

You can reduce the sensitivity; this also reduces the detection area.

- Set potentiometer metres to the desired sensitivity.



Max. sensitivity



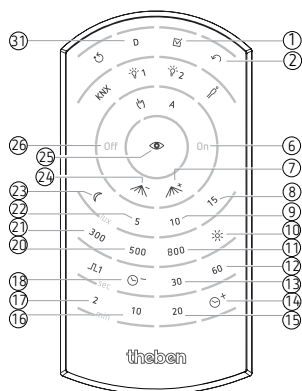


## 9. Settings with remote control

You can also enter the settings with remote controls theSenda P and theSenda S.

### Settings using theSenda P (9070910)

The following parameters or functions can be set with theSenda P:

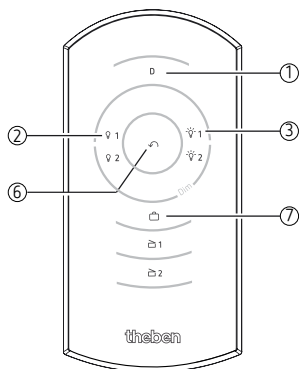


①	Test	Test mode, ends after 10 min
②	Auto	return to Automatic mode
⑥	On	Switch on light (8 hrs)
⑦	Range +	Increase sensitivity
⑧	15 lux	Brightness setpoint value 15 lux
⑨	10 lux	Brightness setpoint value 10 lux
⑩	Lux On	Deactivation of brightness measurement



⑪	800 lux	Brightness setpoint value 800 lux
⑫	60 s	Lighting time delay 60 s
⑬	30 s	Lighting time delay 30 s
⑭	max. time	max. lighting time delay, 20 min
⑮	20 min	Lighting time delay 20 min
⑯	10 min	Lighting time delay 10 min
⑰	2 min	Lighting time delay 2 min
⑱	min. time	min. lighting time delay, 10 s
⑳	500 lux	Brightness setpoint value 500 lux
㉑	300 lux	Brightness setpoint value 300 lux
㉒	5 lux	Brightness setpoint value 5 lux
㉓	min. lux	min. brightness setpoint value, 1 lux
㉔	Range –	Reduce sensitivity
㉕	Teach-in	Teaching in the brightness setpoint value
㉖	Off	Switch off light
㉗	D mode	Twilight switch (motion detector deactivated)

## Settings by using the Senda S (9070911)



①	D mode	Twilight switch (motion detector deactivated)
②	Off	short button push -> switches off the light
③	On	short button push -> switches on the light
⑥	Auto	return to Automatic mode
⑦	Holiday mode	Presence simulation

### Holiday mode

The holiday mode is a presence simulation, which is intended to prevent burglary during temporary absence.

## 10. Technical data

- Operating voltage: 230 V AC, +10 % – 15 %
- Frequency: 50 Hz
- Standby output: 0.3 W
- Detection angle: 220°, 300°
- Detection area: transverse: max. 16 m,  
frontal: max. 5 m
- Installation height: 2 – 4 m
- Creep under protection: yes
- Brightness setting range: 5 – 1000/∞ lux
- Duty cycle range: 1 s – 20 min
- Permissible ambient temperature: –25 °C to +45 °C
- Protection class: II
- Protection rating: IP 55 (wall mounting) and  
IP 54 (ceiling installation)  
(category II) according to EN 60529
- Switching capacity: 10 A ( $\cos \varphi = 1$ )  
10 AX ( $\cos \varphi = 0.3$ )
- Min. switching capacity: 24 V/100 mA
- Switching contact:  $\mu$ -contact 230 V AC
- LED lamps < 2 W 60 W
- LED lamps > 2 W < 8 W 180 W
- LED lamps > 8 W 200 W
- Incandescent and halogen lamp load: 2300 W
- Low-voltage halogen lights: 2300 VA
- Fluorescent lamps VVG:
  - uncorrected: 2300 VA
  - series-corrected: 2300 VA
  - parallel-corrected: 1300 VA (140  $\mu$ F)
- Fluorescent lamps EB: 1200 W
- Compact fluorescent lamps EB: 300 W

